



WELCOME TO *MFT*

Success of the Mission is what every brave individual operating in harm's way strives for.

2023 continues our constant effort to expand with a focus on innovation as we look to answer the needs of the marketplace. Continue to follow us through out 2023, there will be additional new products launched!

Rifle accessories continue to expand including stocks, grips, sights, forearms, and magazines. American designed and manufactured.

Holster Boltaron® and Kydex® designs continue to expand with additional models and fits. The Leather Hybrid Holster series has launched, a holster combining the best of both materials. Handmade, American designed and manufactured.

Tactical/Outdoor bags and packs, MFT's American designers coupled with our professional advisors have developed a line of tactical bags. Backpacks, pistol cases, and rifle cases that are functional, rugged, reliable, and the best value for the cost. Line expansion will bring designs with the MFT stamp of style and functionality. American designed and imported.

Graphic Products, offering standard stocked and custom shop graphic services personalizing magazines, holsters, wallets, and dump trays. Designs are chemically bonded to ensure wear, scratch, and chemical resistance. American designed and manufactured.

Drinkware, we are passionate about our lifestyle, like to have fun and look good doing it! Crack open your favorite beverage; pop smoke, send it or temporally incapacitate the heat or cold! American designed and imported.

<small>MFT</small> NEW PRODUCTS	4
<small>MFT</small> CUSTOM SHOP	6
<small>MFT</small> HOLSTERS	8
<small>MFT</small> GRAPHIC HOLSTERS	10
<small>MFT</small> WALLETS & DUMP TRAYS	22
<small>MFT</small> PEPPER SPRAY	24
<small>MFT</small> MAGAZINES	29
<small>BATTLELINK™</small> STOCKS	38
<small>BATTLELINK™</small> STOCK ADD-ONS	44
<small>ENGAGE™</small> PISTOL GRIPS	46
<small>REACT™</small> VERTICAL GRIPS	50
<small>TEKKO™</small> RAIL SYSTEMS	54
<small>E-VOLV™</small> MUZZLE DEVICES	64
<small>E-VOLV™</small> E-VOLV™ ADD-ON	66
<small>MFT/TORCH™</small> SIGHTS & LIGHTS/MOUNTS	67
<small>MFT</small> SLINGS/MOUNTS	68
<small>MFT</small> BACK UP SIGHTS	70
<small>MFT</small> AK47 RAILS/GRIPS	72
<small>MFT</small> GEAR & APPAREL	70
<small>MFT</small> DRINKWARE	76
<small>MFT</small> PACKS & BAGS	78



MFT *NEW* PRODUCTS



BELLY BAND
Now Shipping, pg 12



DRINKWARE
Now Shipping, pg 76



**LEATHER HYBRID
IWB & OWB**
Now Shipping, pg 14



HOLSTER
Now Shipping, pg 16



MAGS
Now Shipping, pg 28



5.56 MAG DUST COVER
Now Shipping, pg 33



7.62X51 MAG
Now Shipping, pg 28



PRO SERIES
Now Shipping, pg 11



EXD RAIL
Now Shipping, pg 54

IN-STORE *DISPLAYS*

BARREL O'MAGS

400 MFT Extreme Duty Mags, 30 round AR15 5.56x45mm Bagged ready to go in their own sales bin. Roll the barrel into place and pop the lid, this badass barrel will complete the tactical look your aisle needs!
(10 AND 15 ROUND VERSIONS AVAILABLE)

AMMO CRATE DUMP BIN

100 MFT Extreme Duty Polymer Mags, 30 round AR15 5.56x45mm Bagged ready to go in their own sales bin. Drop the crate into place, pop the lid, and insert the header. This badass ammo crate will complete the look your aisle needs!
(10 AND 15 ROUND VERSIONS AVAILABLE)

GRAPHIC MAG DISPLAY

Mission First Tactical's In-Store Display comes free-of-charge with your order. It holds 36 units, 12 different SKUs. Pick your assortment or take a look at what we recommend.

HOLSTER DISPLAY

Mission First Tactical's In-Store Display comes free-of-charge with your order. It holds 24 units, 12 different SKUs. Pick your assortment or take a look at what we recommend.

PEPPER SPRAY

Mission First Tactical's In-Store Display comes free-of-charge with your order. It holds 64 units, 16 different SKUs. Pick your assortment or take a look at what we recommend

P&A DISPLAY

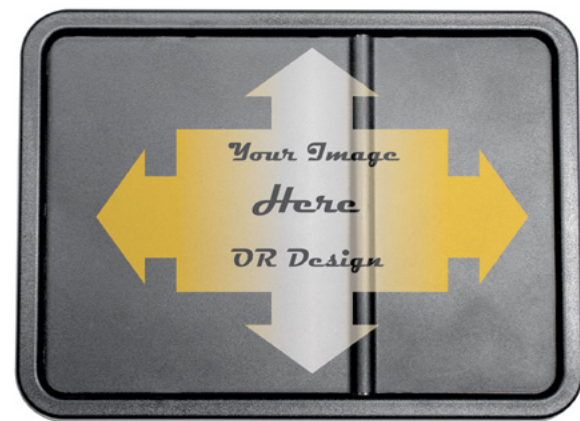
Mission First Tactical's In Store P&A Display comes with our most popular items Everything a customer needs to build or upgrade their rifle.



Have a company logo or just artwork you would like for a custom event? We've got you covered. Choose from a variety of items including; Holsters, Mags, Wallets, Dump Trays, and more. We'll pretty much try to print on anything! Contact us at info@mftltd.com for more info.

CUSTOM GRAPHIC MINIMALIST WALLET

STAY ORGANIZED AND CARRY ONLY WHAT YOU NEED WITH THIS SLIM AND COMFORTABLE WALLET. SECURELY STORE AND EASILY ACCESS UP TO 8 CREDIT CARDS OR 15 BUSINESS CARDS. DESIGNS ARE CHEMICALLY BONDED TO ENSURE WEAR, SCRATCH, AND CHEMICAL RESISTANCE.



CUSTOM GRAPHIC EDC DUMP TRAY

A CONVENIENT PLACE TO DROP ALL YOUR EVERYDAY CARRY (EDC) ITEMS WHEN YOU WALK IN THE DOOR OR SIT DOWN AT YOUR DESK. SMALL COMPARTMENT DESIGNED FOR YOUR PHONE OR SMALL ITEMS WITH A LARGER AREA FOR EVERYTHING ELSE. OVERALL 8.2" X 11.2", SMALL AREA 3.5" X 7" AND LARGE AREA 6" X



MFT HOLSTERS

CUSTOM GRAPHIC IWB OR OWB HOLSTER

Add your own custom graphics to a holster! Designs are chemically bonded to ensure wear, scratch and chemical resistance.



MFT MAGAZINES

CUSTOM GRAPHIC 5.56 POLYMER MAG

ADD YOUR OWN CUSTOM GRAPHICS TO A MAG! DESIGNS ARE CHEMICALLY BONDED TO ENSURE WEAR, SCRATCH, AND CHEMICAL RESISTANCE.



MISSION FIRST
TACTICAL










HANDCRAFTED HOLSTERS

At Mission First Tactical, we take pride in the United States of America and proudly employ US Veterans and citizens from all walks of life. Each holster is handcrafted with care, to precise tolerances, at our headquarters located in Horsham, Pennsylvania. MFT strives to produce an advanced and reliable holster you can depend on.

Laser scan engineering (uninhibited fit, draw, and re-holstering) in addition to quality materials such as Boltaron® or Advanced Kydex® are just a few of the integral processes applied to achieve an all-day comfortable carry.

Available in OWB, IWB, Appendix, Minimalist IWB and a variety of Mag Pouches.

-  **LASER CAD**
-  **ADJUST CANT**
-  **SIGHT CHANNEL**
-  **RED DOT**
-  **VETERANS**
-  **BOLTARON®**



NEW



MFT HOLSTERS PRO SERIES

Revolutionary retention system, In-line Magnetic Retention System (ILMRS™)
11lbs maximum pull, Neodymium magnet maintains fully loaded pistol in holster without any locking devices. Retention does not key off of the (WML) Weapon Mounted Light.

- Includes 1.5 inch Belt Loops & Belt Clip Attachments
- Full Sweatguard
- RMR compatible
- Sight Track compatible with Suppressor Sights etc
- Molded, Trimmed, Assembled and Buffed by Hand
- Curved for Closer, Comfortable, Constant Wear
- Made in the USA at MFT facilities

-  **COMFORT**
-  **RETENTION**
-  **AMBIDEXTROUS**
Right or left handed shooters.

-  **LIFETIME WARRANTY**
-  **MADE IN USA**
-  **HAND CRAFTED**
IN THE UNITED STATES

-  **IN-LINE MAGNETIC RETENTION SYSTEM**
-  **BARREL STABILIZER INTEGRATED INSERT**
-  **VERTICAL WEDGE ULTRA CONCEALED**



NEW

MFT HOLSTERS

BELLY BAND

New material technology and careful design create the most comfortable universal system in the market.

- Hard laminate trigger shield
- Protection for maximum safety
- 2 elastic sleeves for spare magazine, knives, flashlights, pepper spray
- 2 secure kk™m zippered storage pockets for credentials, cash, keys, phone
- Breathable 3d spacer mesh allows for more airflow & increased comfort
- Flush fit on lower back & waist for ideal concealed carry
- Adjustable fit for all-day
- Comfortable carry
- Secure, soft medical grade hook & loop fits up to 52" waist
- Easily worn without a belt
- Can be worn with activewear, sweats leggings

H6-BB-1



NEW

MFT HOLSTERS

LEATHER AIWB HYBRID

The Holster you'll carry every day, best of both worlds. Kydex Style Holster fused with Genuine American Full Grain Leather. Get the Kydex style benefit of exacting tolerances, secure retention and easy re-holstering with Leather's comfort, style and feel. No break in time as compared to traditional leather holsters.

A versatile AIWB, IWB, or OWB capable of use both in right and left-hand positioning; strong side, outside, inside your waistband or appendix carry. Handmade to exacting tolerances for each model of handgun using the most advanced techniques and materials. Adjustable retention and the famous audible "CLICK" makes each draw and re-holster smooth and secure. All units come standard with a 1.5" Belt Clip.

- Adjustable Cant 0-15 degrees
- Ambidextrous hole patterns for right or left-handed carry
- Molded, Trimmed, Assembled and Buffed by Hand
- Comfortable for Constant Wear
- RMR compatible
- Tall Height Sight Track compatible with Suppressor Sights etc



Kydex® Style



COMFORT



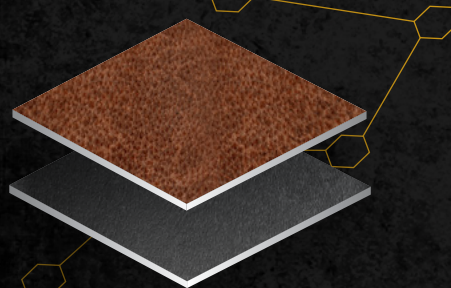
1.5" BELT



RETENTION



Genuine American full grain leather fused with Kydex style polymer, creating one of the most comfortable hybrid holsters on the market.



BEST OF BOTH WORLDS

All the benefits of a Kydex style holster: exacting tolerances, secure retention and easy re-holstering with leather's comfort and style.



+

Kydex® Style



OUTSIDE THE WAISTBAND AVAILABLE



MFT HOLSTERS

VERSATILE IWB/OWB HOLSTER



A versatile AIWB, IWB, or OWB capable of use both in right and left-hand positioning on your strong side, outside, inside your waistband, or appendix carry. Handmade to exacting tolerances for each model of handgun using the most advanced techniques and materials. A superior .08 Boltaron® combined with MFT's proprietary production methods yields holsters offering better detail, cleaner edges and longer service life. Adjustable retention and the famous audible "click" makes each draw and re-holstering smooth and secure. All units are compatible with our comfort carry paddle for OWB conversion and come standard with a 1.5" Belt Clip.

- Adjustable Cant 0-15 degrees
- Ambidextrous hole patterns for right or left-handed carry
- Molded, Trimmed, Assembled and Buffed by Hand
- Comfortable for Constant Wear
- Most Models are designed RMR compatible
- Tall Height Sight Track compatible with Suppressor Sights etc



AMBIDEXTROUS



RETENTION



CUSTOM
GRAPHIC
HOLSTERS
**CHECK OUT THE
CUSTOM SHOP**

MFT HOLSTERS

MINIMALIST HOLSTER



The Minimalist Holster is a low profile, ambidextrous holster with all the performance and reliability of a full-size holster. For use Inside the Waistband (IWB) in the Appendix and 5 o'clock positions. The Claw, for right handed shooters, keeps the heel of the firearm pressed into your side minimizing its print. The famous "audible click" with added side retention makes each draw smooth, secure and ideal for concealed carry.

WARNING, for safety reasons you must remove the Minimalist from your belt for re-holstering. You can then safely secure it back onto the belt.

- Appendix, Inside the Waistband IWB
- Ambidextrous – Wearable Right or Left-hand
- Includes 1.5" Belt Clip
- Ideal for Concealed Carry
- Adjustable Cant 0-15 degrees
- Audible Passive Retention
- Superior .08 Boltaron™ material
- Laser CAD Design for Perfect fit, Smoother Draw, Less Wear
- Claw - Maximizes concealment
- Sculpted for RMR (reflex red dot sights)
- Tall Sight Channel – Open Muzzle

***The Claw
Right Hand**



AMBIDEXTROUS



CUSTOM
GRAPHIC
HOLSTERS
**CHECK OUT THE
CUSTOM SHOP**

MFT HOLSTERS

OWB HOLSTER

OWB Outside the Waistband holster- “A standard

A versatile Outside the Waist Band (OWB) capable of being converted to an Inside the Waist Band (IWB) for strong side carry. Body hugging curved wings spread firearm weight for great comfort and aid in concealment. Handmade to exacting tolerances for each model of handgun using the most advanced techniques and materials. A superior .08 Boltaron® combined with MFT’s proprietary production methods yields holsters offering better detail, cleaner edges, and longer service life. Adjustable retention and the famous audible “click” makes each draw and re-holstering smooth and secure. All units are compatible with belt clips for IWB conversion and comes standard with a 1.5” Belt Loops and Clips

- Molded, Trimmed, Assembled, and Buffed by Hand
- Adjustable Rise, Adjustable Cant 0-15 degrees
- Laser CAD Design, Smooth Draw, Less Wear
- Passive retention audible click
- Right Hand Carry
- Fits RMR reflex sights
- Weighs 3.6 ounces



CURVED COMFORT



SWEAT GUARD



CUSTOM
GRAPHIC
HOLSTERS
**CHECK OUT THE
CUSTOM SHOP**



MFT HOLSTERS

GRAPHIC IWB/OWB HOLSTER



Choose from a growing assortment of graphic holsters. Unique designs and art are chemically bounded to prevent wear and scratches. Don't see a design you're looking for? Check out the custom section on our website and upload your own custom artwork!

- Adjustable Cant 0-15 degrees
- Ambidextrous hole patterns for right or left-handed carry
- Molded, Trimmed, Assembled and Buffed by Hand
- Comfortable for Constant Wear
- Most Models are designed RMR compatible
- Tall Height Sight Track compatible with Suppressor Sights etc

CUSTOM
GRAPHIC
HOLSTERS
**CHECK OUT THE
CUSTOM SHOP**



AMBIDEXTROUS



RETENTION



MFT

HOLSTER ACCESSORIES – SOLD SEPARATELY



PADDLE – Convert your Versatile IWB to an OWB. Easy on off, fits 1.5” belts.



BELT CLIP – IWB – 1.5”. Angled for better belt retention. Wide style for stability. Extended finger tab for easy on



BELT CLIPS – OWB- 1.5” and 1.75”. Extended finger tab for easy on off. For IWB or OWB use. Min – 1.5” – Tuckable. Cant adjustable



OWB BELT LOOPS – 1.5” and 1.75”

MFT HOLSTERS

MAG POUCHES

Mag Pouches – Single, Double, and Rifle

Available in both Single and Double. Outside the Waist Band (OWB) capable of being converted to a Inside the Waist Band (IWB) for strong side carry. Body hugging for great comfort and aid in concealment. Handmade to exacting tolerances for each model of handgun’s magazines using the most advanced techniques and materials. A superior .08 Boltaron® combined with MFT’s proprietary production methods yields holsters offering better detail, cleaner edges, and longer service life. Adjustable retention makes each draw and re-holstering smooth and secure. All units are compatible with belt clips for IWB conversion. Double comes standard with a 1.5” Belt Loops and clips. Single comes standard with 1.5” Belt Clip.

- Flared Opening
- Adjustable Retention
- 1.5” Belt Clip
- Laser CAD Design for Perfect Fit, Smoother Draw, Less Wear
- Ambidextrous
- Molded, Trimmed, Assembled, and Buffed by Hand





EDC DUMP TRAY

A CONVENIENT PLACE TO DROP ALL YOUR EVERYDAY CARRY (EDC) ITEMS WHEN YOU WALK IN THE DOOR OR SIT DOWN AT YOUR DESK. SMALL COMPARTMENT DESIGNED FOR YOUR PHONE OR SMALL ITEMS WITH A LARGER AREA FOR EVERYTHING ELSE.

DESIGNS ARE CHEMICALLY BONDED TO ENSURE WEAR, SCRATCH AND CHEMICAL RESISTANCE.

OVERALL 8.2" X 11.2". SMALL AREA 3.5" X 7" AND LARGE AREA 6" X 7".

- HANDCRAFTED FROM KYDEX MATERIAL OR LEATHER.
- WEAR AND SCRATCH RESISTANT.
- EASY CLEAN SURFACE.
- NON SLIP BOTTOM GRIP PADS.
- MADE IN THE USA.

MINIMALIST WALLET

SLIM STRONG AND DURABLE STAY ORGANIZED AND CARRY ONLY WHAT YOU NEED WITH THIS SLIM AND COMFORTABLE WALLET. SECURELY STORE AND EASILY ACCESS UP TO 8 CREDIT CARDS OR 15 BUSINESS CARDS. DESIGNS ARE CHEMICALLY BONDED TO ENSURE WEAR AND SCRATCH RESISTANCE.

- SLIM WALLET
- RFID PROTECTION
- EDC EVERY DAY CARRY
- KYDEX STYLE MATERIAL
- HANDCRAFTED IN THE UNITED STATES

WHAT'S YOUR SAFETY WORTH?

WHEN IT COMES TO YOUR SELF-DEFENSE DON'T GAMBLE. MANUFACTURED WITH THE SAME FORMULA USED BY THE US ARMY AND AIRFORCE IN A DEPARTMENT OF DEFENSE APPROVED FACILITY, PROVEN TO BE THE VERY BEST IN A BLIND TEST CONDUCTED BY THE US MILITARY.



MAXIMUM STRENGTH
MAXIMUM EFFECTIVENESS AND STOPPING POWER.



US MILITARY FORMULA
SAME FORMULATION USED BY THE US ARMY AND AIR FORCE. MANUFACTURED IN A DEPARTMENT OF DEFENSE APPROVED FACILITY.



FORMULATION
OC/UV -LEVEL 3 10% OC - 1.33% T.C.
OR CS/OC/UV -LEVEL 3 - 2% CS- 10% OC - 1.33% T.C.
2,000,000 SCOVILLE HEAT UNITS



UV IDENTIFIER
IDENTIFY YOUR ATTACKER WITH AN ULTRAVIOLET DYE, VISIBLE UNDER A BLACK LIGHT.



CHROMATOGRAPHY (HPLC)
INDEPENDENT HIGH PERFORMANCE LIQUID CHROMATOGRAPHY TESTING ENSURES CONSISTENT PERFORMANCE.



5 YEAR SHELF-LIFE
STORES SAFELY FOR 5 YEARS.

THREE DELIVERY METHODS:

STREAM

FOCUSED PATTERN WITH LONGEST DISTANCE. GOOD WIND RESISTANCE, MINIMAL CROSS CONTAMINATION.

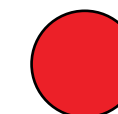
GEL

FOCUSED PATTERN WITH LONG DISTANCE. LEAST CHANCE OF CROSS CONTAMINATION, USE WHERE CROSS CONTAMINATION COULD BE AN ISSUE.

FOG

WIDE PATTERN WITH MID DISTANCE, FASTEST DISBURSEMENT. WIND CAN AFFECT IT BUT EASIEST TO AIM. WILL CROSS CONTAMINATE INDOORS.

TWO FORMULAS:



OC PEPPER/UV DYE

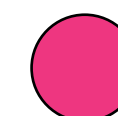


CS TEAR GAS AND OC PEPPER/UV DYE

COLOR SELECTION:



BLACK



PINK

SPRING LOADED FLIP-TOP MK-4

MK- 4 CHEMICAL AEROSOL PROJECTOR - IS DESIGNED FOR EVERY DAY CARRY ON THE DUTY BELT. IT IS A GREAT OPTION FOR OFFICERS WHEN THEY EXPECT TO ENCOUNTER INDIVIDUALS OR SMALL GROUPS OF 2-4 SUBJECTS IN A TYPICAL DAY. ANOTHER USE PERFECT FOR THIS UNIT IS AREA DENIAL: HALLWAYS, STAIRWAYS, BUSES, CLASSROOMS, AND THE LIKE. THE FLIP TOP INDEXES FOR DIRECTIONAL HOLDING, AIMING, AND FIRING FOR EASIER TARGET ACQUISITION.



**POCKET
CLIP** R1



**SPORT
MODEL** R2

PISTOL GRIP MK-9

MK- 9 CHEMICAL AEROSOL PROJECTOR - THIS UNIT IS A PERFECT SOLUTION FOR CROWD MANAGEMENT OPERATIONS, PRISONER CONTROL, PRE-ENTRY, AREA DENIAL, AND OTHER CIVIL DISTURBANCES. THE MK- 9 PROVIDES HIGH VOLUME OUTPUT AND IS AVAILABLE IN MULTIPLE DELIVERY SYSTEMS AND FORMULATIONS TO MEET YOUR DEPARTMENT'S REQUIREMENTS. RECOMMENDED CARRY IS A THIGH HOLSTER OR TACTICAL VEST FOR QUICK DEPLOYMENT.



**SLIM
LINE** R3



HARD CASE R4

ENHANCED MEGA UNIT MK-46HE

MK-46HE ENHANCED MEGA UNIT: THIS UNIT IS AN IN-FIELD, PROPRIETARY QUICK CHARGE SYSTEM. IT CAN BE FILLED AND CHARGED ON LOCATION, ELIMINATING THE NEED TO LEAVE THE ENGAGEMENT AND ALLOWS THE OPERATOR TO REMAIN IN THE FIGHT AND TO CONTINUE APPLYING CONTROLLING FORCE. THE ALUMINUM CYLINDER HOLDING THE FORMULATION IS FITTED WITH A DISCHARGE MECHANISM CONSISTING OF A SPRING-LOADED TRIGGER ASSEMBLY WITH PULL PIN SAFETY AND BUILT-IN HAND GUARD, SHIELDED, AND RECESSED PRESSURE GAUGE. THE MK46E IS THE PERFECT TOOL FOR THE JOB WHEN IT COMES TO CROWD CONTROL, CIVIL DISTURBANCES, AND HAS MULTIPLE USES INSIDE A CORRECTIONS FACILITY. IT CAN EVEN REACH THE SECOND TIER!



**QUICK
DETACH
KEY RING** R5



MARK III R8



DUTY MAGAZINES

MFT MAGAZINES

EXTREME DUTY 10 ROUND CAPACITY 7.62X51 POLYMER MAG

Designed for the AR10A/SR25/M110 pattern rifles. Optimized for use with SAAMI-spec 7.62x51/.308 Winchester ammunition. Utilizing new material technology and manufacturing processes for enhanced strength, durability, and reliability to exceed demanding military performance specs.

- Next Generation Long Glass Fiber Polymer.
- Enhanced Strength and Durability.
- Ribbed front and rear gripping surface.
- Long-life stainless steel spring.
- Four-way anti-tilt self-lubricating follower.
- Flared floor plate.
- Oversized bolt catch.
- Paint Pen dot matrix.
- Toolless disassembly with double floor plate safety release tabs
- Drain holes
- Lower section textured pad offers enhanced purchase

Weight:	Height:	Width:	Length:
4oz	4.13"	1.05"	3.08"

Scorched Dark Earth  MADE IN USA 



MFT MAGAZINES

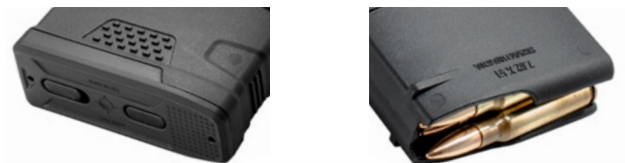
EXTREME DUTY 20 ROUND CAPACITY 7.62X51 POLYMER MAG

Designed for the AR10A/SR25/M110 pattern rifles. Optimized for use with SAAMI-spec 7.62x51/.308 Winchester ammunition. Utilizing new material technology and manufacturing processes for enhanced strength, durability, and reliability to exceed demanding military performance specs.

- Next Generation Long Glass Fiber Polymer.
- Enhanced Strength and Durability.
- Ribbed front and rear gripping surface.
- Long-life stainless steel spring.
- Four-way anti-tilt self-lubricating follower.
- Flared floor plate.
- Oversized bolt catch.
- Paint Pen dot matrix.
- Toolless disassembly with double floor plate safety release tabs
- Drain holes
- Lower section textured pad offers enhanced purchase

Weight:	Width:
5.6oz	1.05"
Height:	Length:
6.25"	3.08"

Scorched Dark Earth  MADE IN USA 





EXTREME DUTY MAGAZINES

MFT MAGAZINES
**EXTREME DUTY 30 RD
5.56 POLYMER MAG**

Utilizing new material technology and manufacturing processes for enhanced strength, durability, and reliability to exceed demanding military performance specifications. Designed for the AR15/M4 but allowing use with a wide range of non-AR15/M4 platforms

- Next Generation Long Glass Fiber Polymer.
 - Enhanced Strength and Durability.
 - Ribbed front and rear gripping surface.
 - Long-life USGI-spec stainless steel spring.
 - Four-way anti-tilt self-lubricating follower.
- Flared floor plate.
 - Oversized bolt catch.
 - Paint Pen dot matrix.
 - Tool-less disassembly with double floor plate safety release tabs
 - Lower section textured pad offers enhanced purchase

EXDPM556	Weight: 5.2oz	Height: 7.49"	Width: .940"	Length: 2.525"
----------	------------------	------------------	-----------------	-------------------

Scorched Dark Earth

LIFETIME WARRANTY

MADE IN USA



CUSTOM
GRAPHIC
MAG LINE
**CHECK OUT THE
CUSTOM SHOP**

DUTY GRAPHIC MAGAZINES

MFT MAGAZINES
**EXTREME DUTY GRAPHIC
5.56 POLYMER MAG**

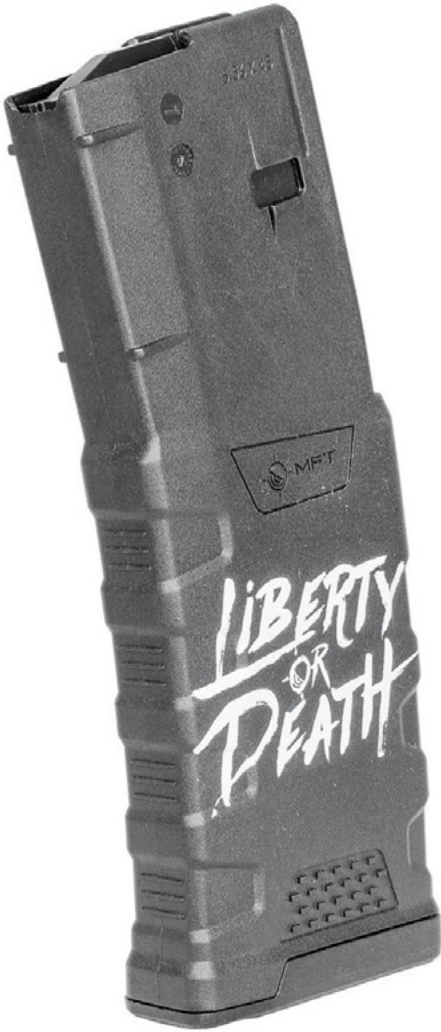
Choose from a growing assortment of graphic mags. Unique designs and art are chemically bounded to prevent wear scratches. Don't see a design you're looking for? Check out the custom section on our website and upload your own custom artwork!

- Next Generation Long Glass Fiber Polymer.
 - Enhanced Strength and Durability.
 - Ribbed front and rear gripping surface.
 - Long-life USGI-spec stainless steel spring.
- Four-way anti-tilt self-lubricating follower.
 - Flared floor plate.
 - Oversized bolt catch.
 - Paint Pen dot matrix.
 - Tool-less disassembly with double floor plate safety release tabs

EXDPM556D	Weight: 5.2oz Height: 7.49"	Width: .940" Length: 2.525"
-----------	--------------------------------	--------------------------------

LIFETIME WARRANTY

MADE IN USA



DUTY WINDOW MAGAZINES

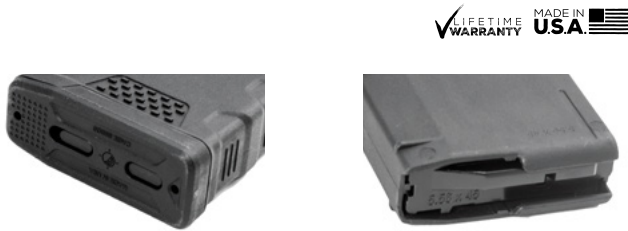
MFT MAGAZINES

EXTREME DUTY WINDOW 30 RD 5.56 POLYMER MAG

Utilizing new material technology and manufacturing processes for enhanced strength, durability, and reliability to exceed demanding military performance specifications. Durable dual-side anti-glare transparent windows with numerical markers and high visibility indicator coil on the spring allow quick visual identification of the approximate number of mags remaining. Designed for the AR15/M4 but allowing use with a wide range of non-AR15/M4 platforms.

- Next Generation Long Glass Fiber Polymer.
- Enhanced Strength and Durability.
- Ribbed front and rear gripping surface.
- Long-life USGI-spec stainless steel spring.
- Four-way anti-tilt self-lubricating follower.
- Flared floor plate.
- Oversized bolt catch.
- Paint Pen dot matrix.
- Tool-less disassembly with double floor plate safety release tabs
- Lower section textured pad offers enhanced purchase

EXDPM556W Weight: 5.12oz Height: 7.49” Width: .940” Length: 2.525”



MFT MAGAZINES

STANDARD CAPACITY 30 ROUND MAGAZINE

30 round 5.56 NATO magazine engineered as an enhancement of the standard STANAG design. The MFT stipple texture, low profile front ribs and flared floor plate aid in extraction and handling. Compatible with tight double and triple magazine pouches. Quality and consistency are ensured by using a specially developed, reinforced, and super tough polyamide.

- MFT stipple texture
- Low profile ribs front texture
- Flared floor plate
- Paint pen dot matrix floor plate
- Drain holes
- Quick ammo dump
- Long-life steel spring
- Four-way anti-tilt follower
- Oversized bolt catch
- Toolless disassembly with double floor plate safety release tabs

SCPM556 Weight: 3.8oz Height: 8.79” Width: 1.125” Length: 2.25”



MFT

5.56 MAG COVER

Supplemental Transit/Impact/Dust Cover for the 5.56x45 MFT Magazine. Designed to protect the top of the magazine/cartridge, minimize debris interference and nest flush during storage and transit.

- Protect against potential cartridge damage
- Minimize debris intrusion
- Nests for Transit – Back tab is flush with Mag spine.
- Protect Magazine Lips – Complete magazine coverage
- Relieves pressure on the feed lips
- Fits in Mag Pouches

PM556-CVR Weight: 0.8oz Height: 1.437” Width: 1.062” Length: 2.75”



MFT MAGAZINE

10 ROUND CAPACITY MAGAZINE

10 round maximum capacity due to internal limiter. The bottom of the magazine is PERMANENTLY sealed and cannot be readily restored. Gray follower buttons indicate 20 round block.

- 10 round maximum capacity
 - Permanently sealed / cannot be restored to full 30 round magazine
 - Gray follower buttons indicate 20 round block
 - Low profile front ribs front texture
 - Flared floor plate
 - Paint pen dot matrix on floor plate
- Drain hole
 - Long-life stainless steel spring
 - Four-way anti-tilt follower
 - Oversized mag catch



10/30PM556 Weight: 4.8oz Height: 8.79" Width: 1.125" Length: 2.25"

Scorched Dark Earth



20
ROUND
INTERNAL
LIMITER

*Magazine cutout for illustration purposes only.



MFT MAGAZINE

15 ROUND CAPACITY MAGAZINE

15 round maximum capacity due to internal limiter. The bottom of the magazine is PERMANENTLY sealed and cannot be readily restored. Red follower buttons indicate 15 round block.

- 15 round maximum capacity
 - Permanently sealed / cannot be restored to full 30 round magazine
 - Red follower buttons indicate 15 round block
 - Low profile front ribs front texture
 - Flared floor plate
 - Paint pen dot matrix on floor plate
- Drain hole
 - Long-life stainless steel spring
 - Four-way anti-tilt follower
 - Oversized mag catch



15/30PM556 Weight: 4.8oz Height: 8.79" Width: 1.125" Length: 2.25"

Scorched Dark Earth



15
ROUND
INTERNAL
LIMITER

*Magazine cutout for illustration purposes only.



MFT MAGAZINE

10 ROUND CAPACITY MAGAZINE

10 round 5.56 NATO magazine engineered as an enhancement of the standard STANAG design. A flared floor plate aids in extraction and handling. The floor plate provides drop protection, has a paint pen dot matrix area for easy identification marking. Two fully functional drain holes ensure full and proper draining. Simple toolless disassembly with double floor plate safety release tabs allows user to safely release spring tension during disassembly and quick ammo dumps. Long-life stainless steel spring and four-way anti-tilt follower ensure reliable feeding. Oversized bolt catch notch in the rear of the magazine provides enhanced reliability of the bolt catch operation.

- Toolless disassembly with double floor plate safety release tabs
- Paint pen dot matrix on floor plate
- Long-life stainless steel spring
- Four-way anti-tilt follower
- Flared floor plate
- Oversized bolt catch
- Drain holes

10PM556 Weight: 2.3oz Height: 3.66" Width: 1.03" Length: 2.70"

Scorched Dark Earth



MFT MAGAZINE

5 ROUND POLYMER MAG

5 round 5.56 MATO magazine engineered as an enhancement of the standard Stanag design. 5 round maximum capacity due to internal limiter. The bottom of the magazine is PERMANENTLY sealed and cannot be readily restored. Orange follower buttons indicate 5 round block. Flared floor plate aid in extraction and handling. The floor plate provides drop protection, has a paint pen dot matrix area for easy identification marking and is compatible with tight double and triple magazine pouches. One fully functional drain hole ensures full and proper draining. Long-life stainless steel spring and four-way anti-tilt follower ensure reliable feeding. Oversized mag catch notch in the rear of the magazine provides enhanced reliability of the bolt catch operation. 5 round maximum capacity

- 5 Round Capacity
- Flared floor plate
- Paint pen dot matrix on floor plate
- Drain hole
- Long-life stainless steel spring
- Four-way anti-tilt follower
- Oversized mag catche

5/10PM556 Weight: 4.8oz Height: 8.79" Width: 1.125" Length: 2.25"

Scorched Dark Earth



SUPERIOR PERFORMANCE • SUPERIOR PRICING • VERSATILE DISPLAYS

MAGAZINE DISPLAYS

MFT MAGAZINES

10 PACK OF MAGS

Customers having a hard time carrying mags to the counter? Make it easy for them with the 10 Pack of Mags! 10 MFT Standard Capacity Polymer Magazines packed out in a rugged Ammo Can Style cardboard box!



MFT MAGAZINES

GRAPHIC MAGS

Mission First Tactical's In Store Display comes free-of-charge with your order. It holds 36 units, 12 different SKUs. Pick your assortment or take a look at what we recommend



MFT MAGAZINE

BARREL O'MAGS

400 MFT Extreme Duty Polymer Mags, 30 round AR15 5.56x45mm bagged ready to go in their own sales bin. Roll the barrel into place and pop the lid, this bad ass barrel will complete the tactical look your aisle needs!



MFT MAGAZINE

AMMO CRATE DUMP BIN

100 MFT Extreme Duty Polymer Mags, 30 round AR15 5.56x45mm Bagged ready to go in their own sales bin. Drop the crate into place, pop the lid and insert the header. This bad ass ammo crate will complete the look your aisle needs!



BATTLELINK™

ALUMINUM MINIMALIST MILSPEC STOCK

Battlelink Aluminum Minimalist Stock.

The lightest collapsible aluminum stock of its kind on the market, while still maintaining the strength and dependability you rely on. Manufactured from 6061-T6 Aluminum, billet and extruded hard coat anodized to mil-spec, the stock is completely adaptable to the needs of the environment and operation by utilizing custom accessory mounts, interchangeable butt plates, and accommodating a new custom sling configuration. All done without sacrificing any of the functional requirements.

- Slide-on replacement for collapsible butt stock
- Angled non-slip checkered buttpad allows faster presentation, even with body armor
- Rear Mounted Sling Slots with single point mounting
- Quick Detach Sling mounting point is positioned for optimum usage including ambidextrous shooters
- Upper section provides enhanced cheek weld
- MilSpec Buffer Tube Spec
- Removable butt plate for interchangeable configurations

Weight: 8.8oz BMSMIL-MTL
Height: 5.13" Aluminum Type: 6061-T6
Width: 1.465" Mil Spec size 1.148 diameter receiver extensions (buffer tube)
Length: 6.8"



BATTLELINK™

MINIMALIST STOCK

All of the functional requirements are met while keeping the weight under 6 ounces. This stock adapts and changes to your environment or operational needs by utilizing custom accessory mounts and accepts a new optimized sling configuration. The lightest stock of its kind in the market.

- Slide-on replacement for collapsible butt stock
- Angled non-slip rubberized buttpad allows faster presentation, even with body armor
- Multiple Sling Slots with single point mounting
- Quick Detach Sling mounting point is positioned for optimum usage including ambidextrous shooters
- Upper section provides enhanced cheek weld

Weight: 5.8oz BMS Commercial BMSMIL-BL **NSN:**
Height: 5.223" BMSMIL MilSpec **1005226366907**
Width: 1.752" BMST Tube assembly (BMST kit includes: 6 position buffer tube; spring; buffer; lock ring; latch plate)
Length: 7.084"



Roll pin included to pin stock in place once location is determined by the end user for compliance, firearm DOES NOT need to be altered.

BMSRSC Commercial



BATTLELINK™

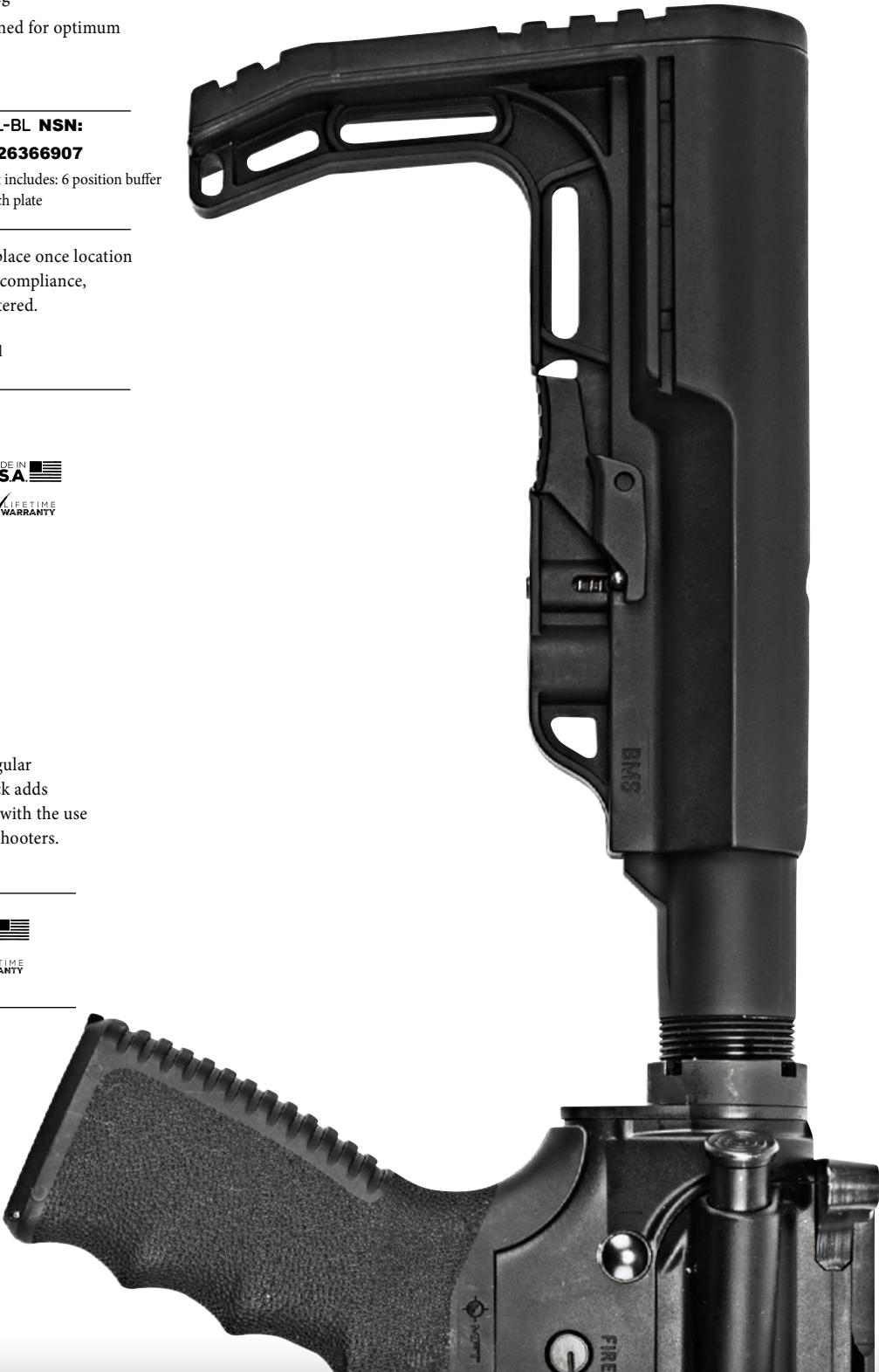
MINIMALIST STOCK W/ NRAT STRAP

Approximately 8 feet of Paracord braided in a regular weave directly onto a Battlelink™ Minimalist Stock adds only a half an ounce. The strap will not interfere with the use of the QD mount or its benefit to ambidextrous shooters.

Weight: 6.3oz BMSNRAT Commercial
Height: 5.223" BMSMILNRAT Milspec
MADE IN USA LIFETIME WARRANTY



Scorched Dark Earth



BATTLELINK™

**EXTREME DUTY
MINIMALIST STOCK**

Building on our popular minimalist platform we recognized the need for a more robust stock capable of withstanding long term abuse delivered by larger caliber firearms such as tactical shotguns of 12 gauge or 7.62X51 AR-10 while remaining nimble enough for use on a 5.56.

- Slide-on replacement for collapsible butt stock
- Angled non-slip rubberized removable buttpad allows faster presentation, even with body armor
- Multiple Sling Slots with single point mount points
- Quick Detach Sling mounting point is positioned in the rear
- Upper section provides enhanced cheek weld
- Single MLOK connection point.

✓ LIFETIME WARRANTY
MADE IN USA. 🇺🇸

BMSMIL-EXD	Weight:	8.8oz	Height:	4.875"
------------	---------	-------	---------	--------



● Scorched Dark Earth

BATTLELINK™

**MINIMALIST
PISTOL STABILIZER**

Designed to be held and operated with one hand, counterbalancing muzzle weight and stabilizing the pistol against the shooter's forearm. Sleek and comfortable along all planes eliminating any snag hazards and abrasive areas resulting in a comfortable interface.

- Compatible with a standard Milspec carbine receiver extension/buffer tube
- Set screw locates into the buffer tuber plunger hole
- Multiple Sling Slots with single point mount point
- Forearm Strap Slots
- Quick Detach Sling mounting point positioned in the rear
- Upper section provides enhanced cheek weld

WARNING: This Products is subject to all applicable federal, state and local laws and regulations. It is the purchaser's obligation to check for compliance before purchasing. Modifying or redesigning the Stabilizer may be subject to NFA regulation and is not recommended.

✓ LIFETIME WARRANTY
MADE IN USA. 🇺🇸

BMPSE	Weight:	4oz	Height:	5.25"
-------	---------	-----	---------	-------

● Scorched Dark Earth



BATTLELINK™
UTILITY STOCK

Adapts and changes based on your environment or operational needs, from storing additional items in the rear compartment to utilizing custom accessory mounts.

- Slide-on replacement for original collapsible butt stock
- Angled non-slip buttpad allows faster presentation, even with body armor
- Pivoting rear accessed large and water resistant storage compartment
- Customizable foam storage block with quick access tab diminishes rattle
- Quick Detach Sling mounting points (2) are positioned for optimum usage
- Multiple Sling Slots
- Upper section provides enhanced cheek weld
- Accessory mounting provisions

Weight:	BUS Commercial
9.01oz	BUSMIL Milspec
Height:	BUST Tube assembly (BUST kit includes: 6 position
5.224"	buffer tube; Spring; Buffer; Lock ring; Latch Plate



MADE IN
USA
✓ LIFETIME
WARRANTY

Scorched Dark Earth



BATTLELINK™
LOW PROFILE STOCK

Low profile version of the Utility Stock; adapts and changes based on your environment or operational needs, from storing additional items in the rear compartment to utilizing custom accessory mounts.

- Slide-on replacement for original collapsible butt stock
- Angled non-slip buttpad allows faster presentation, even with body armor
- Pivoting rear accessed large and water resistant storage compartment
- Customizable foam storage block with quick access tab diminishes rattle
- Quick Detach Sling mounting points (2) are positioned for optimum usage
- Multiple Sling Slots
- Upper section provides enhanced cheek weld
- Accessory mounting provisions

Weight:	BULS Commercial
8.75oz	BULSMIL Milspec
Height:	BULST Tube assembly (BULST kit includes: 6 position
5.224"	buffer tube; Spring; Buffer; Lock ring; Latch Plate



MADE IN
USA
✓ LIFETIME
WARRANTY

Scorched Dark Earth



MFT STOCK ADD-ONS

BATTLELINK™



- Camo Grey
Mil Spec
Pantone 36170
- Foliage Green
Mil Spec
Pantone 34160
- Flat Dark Earth
Mil Spec
Pantone 20270
- Scorched Dark Earth

BATTLELINK™
ADJUSTABLE CHEEK PIECE

The solution to varying heights of mounted optics. Easily and quickly adjusts to provide optimal eye-to-optic focus and a strong cheek weld contact position. Allows the full usage of the AR15 charging handle due to the built-in limiting stop that insures interference-free operation of the rifle.

- Stable shooting platform with 1.25 inch of travel
- Charging handle can be operated with cheek piece in any position other than indicated by stop
- Designed for use with Battlelink™ Utility Stock Series

BACP	Weight: 2.72oz	Height: 4.069"	Width: 2.190"	Length: 5.546"
------	--------------------------	--------------------------	-------------------------	--------------------------

MADE IN
USA 
LIFETIME
WARRANTY



The ENGAGE™ tactical pistol grip series provides a combination of fit and function unparalleled by the originally supplied M16/AR15/ M4/HK416/AK47 pistol grip.

ENGAGE™
EPG27 PISTOL GRIP

Current Handgun pistol grips were carefully considered and reviewed to create a modern full-sized AR pistol grip that offer positive support and control for one handed operations. The finger swell and grooved back straps provide a positive grip surface with wet or gloved hands.

- Increases operator comfort and weapon performance, providing more control during reloading and firing
- Tab covers the receiver gaps that cause discomfort during sustained usage and can be easily removed if desired
- Designed for M16/M4/AR15/HK416
- Full Size Pistol Grip
- Optimal for one handed operation



EPG27	Weight: 2.4oz	Height: 5.007"	Width: 1.22"	Length: 3.026"
-------	------------------	-------------------	-----------------	-------------------

ENGAGE™
TACTICAL PISTOL GRIP V2

15 degree angle improves comfort and control. Texture provides a positive grip surface with wet or gloved hands A combination of fit and function unparalleled by the originally supplied M16/AR15/ M4/HK416 pistol grip.

- 15 degree angle
- Tab covers the receiver gaps that cause discomfort during sustained usage and can be easily removed if desired
- Designed for M16/M4/AR15/HK416



	Weight: 2.2oz	Height: 5.025"	Width: 1.22"	Length: 3.043"
--	------------------	-------------------	-----------------	-------------------

Scorched Dark Earth



ENGAGE™
TACTICAL PISTOL GRIP

Finger swells are textured and the grooved backstraps provide a positive grip surface with wet or gloved hands.

- Tab covers the receiver gaps that cause discomfort during sustained usage and can be easily removed if desired
- Finger swells and a grooved backstrap provide a non-slip grip
- Secure water resistant storage compartment
- Plug retention for one handed storage access
- Customizable storage system with quick access tab diminishes rattle



	Weight: 2.4oz	Height: 4.804"	Width: 1.22"	Length: 3.420"
--	------------------	-------------------	-----------------	-------------------



ENGAGE™
INTERCHANGEABLE
PISTOL GRIP

Interchangeable textured finger swells (3) and back straps (3) provide a positive grip surface with wet or gloved hands and allow the user to customize the fit. A combination of fit and function unequaled by the originally supplied M16/AR15/ M4/HK416 pistol grip.

- Designed for M16/M4/AR15/HK416
- Any combination of interchangeable back straps and finger swells allow for a custom fit for any sized hand
- Tab covers the receiver gaps that cause discomfort during sustained usage and can be easily removed if desired
- Secure water resistant storage compartment
- Customizable storage system with quick access tab diminishes rattle



Weight: 3.7oz	Length: 3.196"	
Height: 4.847"		
Width: 1.220"		EPGI16-SDE
EPGI16-BL		NSN:
NSN: 1005226366804		1005226366806





MISSION FIRST

M18
SMOKE
RED

FT-707YW-018



Scorched Dark Earth

A REACT™ MAGWELL GRIP



A compact textured vertical grip designed for close handhold application at the low ready or CQB situations. Locates support hand forward of the magazine well to prevent injury if an overcharged round causes the ejection of the magazine. Right and left handed pressure pad wells for wired switches and spare battery storage compartment. Allows the support hand to apply rearward pressure keeping the weapon shouldered, yielding better muzzle control and accuracy.

- Allows mid-point balance and less effort to direct muzzle
- Pressure pad wells are designed for Surefire™ ST Switch and allow accessory activation for both RH and LH operators
- Secure water resistant storage compartment
- Will not interfere with magazine
- Designed for M16/M4/AR15/HK416

RMG	Weight:	Height:	Width:	Length:
	3.73oz	4.314"	1.524"	2.205"

B REACT™ TORCH GRIP



A combination of compact textured vertical grip and illumination mount. Designed for use with a .75", .825", or 1" diameter rear activated or wired switch flashlight/laser. Provides a positive grip surface and allows the support hand to apply rearward pressure keeping the weapon shouldered, yielding better muzzle control and accuracy.

- Combination vertical grip and illumination mount
- Accepts light sources of .75", .825", 1" diameter
- Lock-out switch prevents unintentional activation of light source
- Grooved gripping surfaces to eliminate hand slippage
- Pressure pad well is designed for Surefire™ ST Switch and allow accessory activation for both RH and LH operators
- Thumb activation switch for wireless light activation
- Secure water resistant storage compartment
- Customizable storage system; quick access tab diminishes rattle
- Flat non-slip bottom surface aids in supported firing positions
- International shipments DO NOT require an export license, this item ships freely

RTG	Weight:	Height:	Width:	Length:
	7.4oz	4.727"	1.573"	4.833"

C REACT™ QUICK DETACH GRIP



Full fist-sized textured vertical grip that quickly detaches or attaches without the use of tools and provides a positive grip surface. Allows the support hand to apply rearward pressure keeping the weapon shouldered, yielding better muzzle control and accuracy.

- Quick detach vertical grip
- Grooved gripping surfaces to eliminate hand slippage
- Secure water resistant storage compartment
- International shipments DO NOT require an export license, this item ships freely

RQDG	Weight:	2.72oz	Height:	4.069"
------	---------	--------	---------	--------

D REACT™ SHORT GRIP



Compact textured vertical grip designed to minimize material and dimension while providing a positive grip surface. Allows the support hand to apply rearward pressure keeping the weapon shouldered, yielding better muzzle control and accuracy.

- Secure water resistant plugged battery or part storage
- Customizable storage system; quick access tab diminishes rattle
- Flat non-slip bottom surface aids in supported firing positions
- International shipments DO NOT require an export license, this item ships freely

RSG	Weight:	2.0oz	Height:	3.960"
RSG-	NSN:	1005226366891		

E REACT™ FOLDING GRIP



A textured vertical grip that deploys in either a vertical or horizontal position and provides a positive grip surface. Allows the support hand to apply rearward pressure keeping the weapon shouldered, yielding better muzzle control and accuracy.

- Allows deployment in either vertical or horizontal position
- Push button allows easy selection of position
- Secure water resistant storage compartment
- Customizable storage system; quick access tab diminishes rattle
- Flat non-slip bottom surface aids in supported firing positions

RFG	Weight:	3.73oz	Height:	4.314"
-----	---------	--------	---------	--------

F REACT™ FULL SIZE GRIP



Full fist-sized textured vertical grip with finger swells that provides a positive grip surface. This grip allows the support hand to apply rearward pressure to keep the weapon shouldered to enhance muzzle control and accuracy.

- Full-size vertical grip
- Contoured finger swells allow a firm grip even with gloved hands
- Secure water resistant storage compartment
- Customizable storage system; quick access tab diminishes rattle
- Flat non-slip bottom surface aids in supported firing positions
- International shipments DO NOT require an export license, this item ships freely

REG	Weight:	2.0oz	Height:	3.960"
-----	---------	-------	---------	--------



REACT™



M-LOK™ COMPACT FOREGRIP

A combination of compact textured vertical grip and illumination mount. Designed for use with a .75", .825", or 1" diameter rear activated or wired switch flashlight/laser. Provides a positive grip surface and allows the support hand to apply rearward pressure keeping the weapon shouldered, yielding better muzzle control and accuracy.

- Ultra low-profile design
- Compliments various shooting grip styles
- Contoured shape and texture prevent slipping
- Vertical length maximizes stability
- Wide grip design fills palm for max comfort

RCG-	Weight:	.08oz	Height:	2.4"
------	----------------	--------------	----------------	-------------





TEKKO™

EXD FREE FLOAT M-LOK™ RAIL SYSTEM

Boasting multiple improvements, the new EXD Free Float M-LOK® Rail System is designed with the modern shooter in mind. Streamlined and user-friendly, the updated design allows shooters more time to send rounds down range and less time making field adjustments or modifications.

In addition, the upgraded upper receiver attachment system increases shooter stability and also minimizes the inner diameter, providing a more streamlined appearance. Updated modern wall thickness addresses the flimsiness of other rail systems by providing the strength needed to attach a variety of M-LOK® accessories.

TMEXD-MHG-10-BL	Length: 10"	Weight: 9.80 oz
TMEXD-MHG-135-BL	Length: 13.5"	Weight: 12 oz
TMEXD-MHG-15-BL	Length: 15"	Weight: 13.3 oz



- 7 sides of M-LOK®
- Anti-rotation technology
- IR anti-reflective coating
- Steel non-timing barrel nut
- Ultra streamlined appearance



EASY INSTALL



TEKKO™

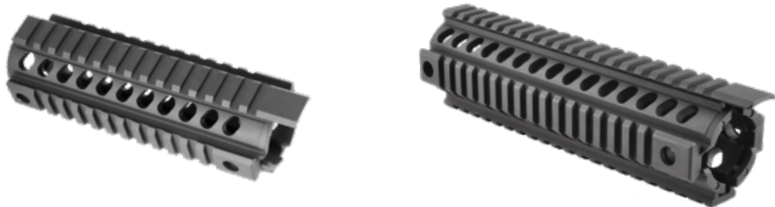
DROP IN INTEGRATED RAIL SYSTEM

The Tekko Metal AR Rail System replaces the plastic factory handguard in minutes and requires no gunsmithing or special installation tools. Drop in, screwless, installation means no permanent alterations need be made to the rifle. The unit is held in place by the Delta ring and handguard cap. Four MIL-STD Picatinny Rails provide secure mounting for rail attachments and accessories such as vertical grips, lights, lasers, bipods, and other rail mounted kit. Monolithic style continuous top rail eliminates the gap between the receiver and rail. Four QD mounts, two on each side for push button sling swivels. Lightweight 6061 aluminum construction is Type 3 hard coat anodized.

- No gunsmithing, drop in screwless installation, held in place by Delta ring and handguard cap with no permanent alterations to rifle
- 4 MIL-STD 1913 Picatinny Rails provide a secure platform for mounting Picatinny accessories
- 4 QD mounts, two on each side for push button sling swivels
- Monolithic style continuous top rail
- Lightweight 6061 aluminum construction is hard coat anodized



Length: 7.25" Weight: 12oz



TEKKO™

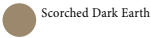
TEKKO POLYMER AR15 CARBINE 7" DROP IN M-LOK™ RAIL SYSTEM

The Tekko Polymer AR15 Carbine M-LOK™ Rail System replaces the plastic factory handguard in minutes and requires no gunsmithing. No permanent alterations need to be made to the rifle, it's a drop in screwless installation, the unit is held in place by the Delta ring and handguard cap. M-LOK™ provides a secure platform for mounting Picatinny rails and accessories such as vertical grips, lights, lasers, bipods, and other rail mounted kit. There is a built-in QD mount for right handed shooters, sorry lefties you'll have to buy the M-LOK™ QD accessory. A monolithic style continuous top rail eliminates the gap between the receiver and rail. MFT's proprietary polymer ensures heat and impact resistance, made in the USA with a Lifetime Warranty.

- No Gunsmithing, drop in screwless installation, held in place by Delta ring and handguard cap with no permanent alterations to rifle
- Built-in QD mount for right handed shooters
- M-LOK™ locations provide a secure platform for mounting Picatinny rails and accessories
- Monolithic style continuous top rail



TP15MRS Length: 8.961" Weight: 4.8oz

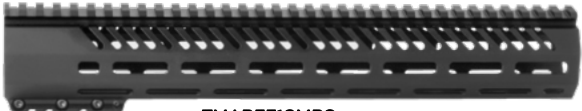




TMARFF7MRS
7" Free float rail



TMARFF10MRS
10" Free float



TMARFF13MRS
13.5" Free float



TMARFF15MRS
15" Free float



TEKKO™

FREE FLOAT M-LOK™ RAIL SYSTEM

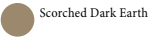
Free Float M-LOK™ Rail System replaces the plastic factory handguard. M-LOK™ attachment system provides secure mounting for MIL-STD 1913 Picatinny Rails and accessories such as vertical grips, lights, lasers, bipods, and other rail mounted kit. Will accommodate most suppressor installations. Patent pending mounting, indexing and lock up system. Larger range of modularity with offset mounting positions as well as the traditional 12, 3, 6, and 9 o'clock positions. Monolithic style top rail eliminates the gap between the receiver and rail. Minor assembly required, utilizes standard barrel nut and will accommodate a standard front sight post, low profile gas block (pg 62) or Picatinny Rail gas block. The M-LOK™ system allows for universal modularity between numerous manufacturers of accessories, and accessory rails. Lightweight 6061 aluminum construction is Type 3 hard coat anodized.

- Handguard replacement
- Secure platform for mounting Picatinny Rails and accessories
- Monolithic style top rail
- Allows most suppressor installations
- Lightweight 6061 aluminum construction is Type 3 hard coat anodized
- Removal of Delta ring and front sight post required
- M-LOK™



TMARFF7MRS	Length: 7"	Weight:	4.8oz	Height:
TMARFF10MRS	Length:	10.062"	Weight:	8.8oz
TMARFF13MRS	Length:	13.5"	Weight:	9.6oz
TMARFF15MRS	Length: 15"	Weight:	11.2oz	Height:

*I.D. clearance at barrel







TEKKO™

5 SLOT M-LOK™ PICATINNY RAIL

Metal M-LOK™ Rails are a MIL-STD 1913 Picatinny Rail that will interface with any M-LOK™ mounting surface. Manufactured from lightweight, Type 3 hard coat anodized 6061 aluminum.

- 2 3/8 " (5 slot) MIL-STD 1913 Picatinny Rail for use with all M-LOK™ systems
- Secure platform for mounting M-LOK™ accessories
- Easy attachment and removal
- 6061 aluminum is Type 3 hard coat anodized



Length:	3.145"	Weight:	N/A
---------	--------	---------	-----



E-VOLV™

3 PRONG PORTED MUZZLE BRAKE

5.56 - .223 AR15/M4

Reduces muzzle climb with the aid of 4 ports on top. The 2 ports on either side direct gas horizontally keeping recoil to a minimum. The front three prongs help direct the remaining gas and concussion forward from the shooter. All these elements make up a very comfortable muzzle brake for indoor and outdoor shooters. Where other muzzle brakes direct gas only horizontally MFT's comp takes it a step further.

- 2 port design for lateral gas dispersion aids in reducing recoil
- 4 top port design aids in keeping the muzzle brake down
- 3 prong design aids in directing gas and concussion forward and away from shooter
- 416 Stainless Steel
- Black Nitride Finish
- Milspec Crush Washer Included – 17PH4 Stainless Steel pre-hardened



E2ARMD1	Weight:	Height:	Width:	Length:
	1.6oz	.625"	.625"	2.00"

E-VOLV™

5 DIRECTION COMPENSATOR

5.56 - .223 AR15/M4

Disperses gas in 5 distinct directions. This feature aids in wide gas flow to limit recoil and muzzle climb. There are no bottom slots to keep the dust down during low level shooting. Slim profile matches the contour of the M4 style AR barrel, making for that clean, sleek transition.

- 2 Multi-port gas flow aids in recoil reduction
- 416 Stainless Steel
- Black Nitride Finish
- Milspec Crush Washer Included – 17PH4 Stainless Steel pre-hardened



E2ARMD2	Weight:	Height:	Width:	Length:
	1.6oz	.625"	.625"	2.00"

E-VOLV™

3 PRONG FLASH HIDER

5.56 - .223 AR15/M4

Projects gas in the proper directions to keep flash footprint to a minimum. Also channeling a small amount of gas through a port upward to help diminish muzzle climb. The Length helps keep the flash signature to a minimum for most 5.56/.223 bullet grain weights. Flash less shooting experience.

- Reduces flash significantly with a three-prong curved design
- Small port hole on top helps direct gas to aid in muzzle climb reduction

E2ARMD5

Weight: 2.4oz Height: .751"

E-VOLV™

4 PRONG SIDE PORT MUZZLE BREAK/COMPENSATOR HYBRID

5.56 - .223 AR15/M4

Designed to be a true hybrid. Gas is forced forward and away from the shooter as well as disbursed out the sides. The first chamber helps direct gas up through the ports on top which aids with muzzle climb. Gas exiting out the sides aid in recoil reduction. The forward 4 prongs direct the concussion and remaining gas forward and away from the shooter. This will keep the shooter to your left and right a bit happier.

- 4 prongs gas direction design aids in gas dispersion
- 2 horizontal gas ports aid in felt recoil
- 2 vertical ports aid in muzzle climb reduction
- 416 Stainless Steel
- Black Nitride Finish
- Milspec Crush Washer Included – 17PH4 Stainless Steel pre-hardened



E2ARMD3	Weight:	Height:	Width:	Length:
	2.4oz	.875"	.875"	2.00"

E-VOLV™

TAPERED 3 PORT COMPENSATOR

5.56 - .223 AR15/M4

Designed to reduce recoil and muzzle climb. 2 angled ports on top direct gas up and backwards to aid in muzzle climb and recoil reduction. 3 horizontal ports on each side direct gas out and away aiding in recoil reduction and adequate gas disbursements. Slim profile makes for a clean transition to the end of the barrel and is a must have for any custom AR build.

- Slim profile
- 3 horizontal port holes aid in recoil reduction and gas disbursement
- 2 vertical port holes aid in reducing muzzle climb and recoil



E2ARMD4	Weight:	Height:	Width:	Length:
	2.4oz	.625"	.875"	2.25"



E-VOLV™

AR15 OVERSIZED CHARGING HANDLE LATCH

Designed for use with the AR15, M4, and M16. Replaces the standard charging handle latch in minutes. Oversized latch allows for easy manipulation of the charging handle especially with gloved hands. ***Charging handle not included**

- Oversized charging handle latch
- Replaces the standard charging handle latch
- Provides positive manipulation of the charging handle



E20CHL	Weight:	0.32oz	Height:	0.5" Width:
--------	---------	--------	---------	-------------



E-VOLV™

AR15 LOW PROFILE CHARGING HANDLE LATCH

Designed for use with the AR15, M4, and M16. Replaces the standard charging handle latch in minutes. Lower profile latch allows for easy manipulation of the charging handle with either hand while offering larger purchase pad than standard charging handle latch.

***Charging handle not included**

- Low Profile charging handle latch offers larger purchase pad than original charging handle latch
- Replaces the standard charging handle latch
- Provides positive manipulation of the charging handle with either hand



E2LPCHL	Weight:	0.26oz	Height:	0.35"	Width:	0.867"	Length:	1.193"
---------	---------	--------	---------	-------	--------	--------	---------	--------



E-VOLV™

ENHANCED MAG RELEASE

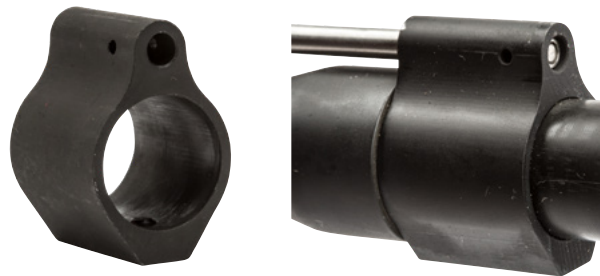
Provides an enlarged contact surface on an AR15 for quick magazine changes. Easy bolt-on installation, no gunsmithing required. Constructed from aviation grade aluminum.

- Mil-spec anodized aluminum
- Two-piece construction for easy installation
- Larger contact surface for positive activation
- Compatible with most 5.56 and 7.62 pattern receivers



E2AREMR	Weight:	0.128oz	Height:	.435"
---------	---------	---------	---------	-------





E-VOLV™

LOW PROFILE GAS BLOCK

Designed for use with the AR15, M4, and M16. Fits .750 barrels, 1 inch long, steel with a Manganese phosphate finish. Mounting utilizes knurled cup pin steel set screws. Allows usage with handguard systems that extend past the standard gas port location on the barrel.

- Fits .750 barrels
- Steel with a Manganese phosphate finish
- Mounts utilizing knurled cup pin steel set screws
- One inch (1")



E2LPGB	Weight: 1.4oz	1.363"	Width: 0.9"	Length: 0.950"
--------	----------------------	---------------	--------------------	-----------------------

E-VOLV™

ENHANCED TRIGGER GUARD

Replaces factory trigger guard and oversized opening offers full access to the trigger, including gloved hands. Polymer trigger guard held in place with included standard roll pins.

- Polymer
- Offers full access to the trigger
- Hardware included



E2ARETG	Weight: 3.5oz	Height: 4.091"	Width: 1.220"	Length: 2.999"
---------	----------------------	-----------------------	----------------------	-----------------------



TORCH™

STANDARD MOUNT

Accepts a 3/4", .825" or 1" illumination device. Two large purchase pads allow for tool free quick mounting or reconfiguration on a Picatinny Rail.

- Quick detach mount for illumination source or lasers
- Large purchase pad for quick release
- Accommodates .75" - .825" - 1" diameter light/laser
- International shipments DO NOT require an export license, this item ships freely



TSM	Weight:	2.0oz	Height:	3.960"
-----	----------------	--------------	----------------	---------------



TORCH™

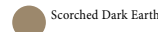
BACKUP LIGHT

Low profile, Picatinny mounted, pressure pad activated light ideal for home protection, navigation or as backup to a primary illumination source. Low output illumination for signature reduction during patrol, stealth structure search, approach to target, and breaching operations. 10-year storage lifespan, 12-hour burn time, 20-lumen output weighing just 22 grams.

- Power button can be set to momentary or constant on
- Set screw for Picatinny Rail mounting
- Battery door opens with quarter-turn
- Primary LED
- Low-output LED

DOMESTIC U.S.A SALES ONLY

Weight: .8oz	TBLW White /White LED
Height: .665"	TBLWR White /Red LED
	TBLIR IR/Red LED





MFT CLASSIC™

ONE POINT SLING MOUNT

One Point Sling Mount is a single point sling mount for snap clips or conventional slings up to 1.25” webbing. No tube disassembly necessary; remove collapsible buttstock, slide on tube, position properly and secure. CNC machined from aviation grade aluminum with matte black finish.

- Single point mount
- No tube disassembly required
- CNC machined from aviation grade aluminum with matte black finish



OPSM	Weight:	0.8oz	Height:	2.11”
------	---------	-------	---------	-------

TEKKO™

METAL M-LOK™ QUICK DETACH SLING MOUNT



Metal M-LOK™ QD Sling Mount interfaces with any M-LOK™ mounting surface. Designed for use with the standard push button, quick detach sling swivel. Low profile and snag resistant design requires 2 slots for mounting. Braked, 4 position (360°), non-rotating locking interface. Machined from lightweight, Type 3 hard coat anodized, 6061 aluminum.

- Designed for use with the standard push button, QD sling swivel
- Interfaces with any M-LOK™ mounting surface
- 6061 aluminum construction is Type 3 hard coat anodized
- Braked, 4-position (360°), non-rotating locking interface
- Low profile and snag resistant design



	Weight:	N/A	Height:	.440”
--	---------	-----	---------	-------



TEKKO™

KEYMOD QUICK DETACH SLING MOUNT

Metal KeyMod™ QD Sling Mount interfaces with any KeyMod™ mounting surface. Designed for use with the standard push button, quick detach sling swivel. Low profile and snag resistant design requires 2 slots for mounting. Braked, 4 position (360°), non-rotating locking interface. Machined from lightweight, Type 3 hard coat anodized, 6061 aluminum. Mounting hardware is stainless steel and features a snag resistant design with a self-contained assembly that eliminates the loss of mounting hardware.

- Designed for use with the standard push button, QD sling swivel
- Interfaces with any KeyMod™ mounting surface
- Lightweight 6061 aluminum construction is Type 3 hard coat anodized
- Self-contained assembly eliminates the loss of mounting hardware
- Braked, 4-position (360°), non-rotating locking interface
- Low profile and snag resistant design
- Requires 2 Slots for mounting
- KeyMod™ The New Standard in Modularity



TMKMODSM	Weight:	0.8oz	Height:	.406”
----------	---------	-------	---------	-------



MFT CLASSIC™

ONE POINT SLING

The MFT Classic™ one point sling allows easy movement when operating inside confined spaces. Maintains its structure for easy donning and has upgraded tubular webbing with fully-enclosed bungee portion, allowing for increased durability.

- Constructed from 1.5” nylon web
- Metal carabiner for easy attachment
- Fully adjustable sling fits all body sizes
- High density bungee cord and carabiner are colored black
- Quick release side buckle

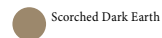


OPS1 Weight:	7.3oz	Height:	26.425”
--------------	-------	---------	---------



MFT BACK UP SIGHTS

OVER ENGINEERED FOR TODAY'S MODERN WARRIOR



MFT SIGHTS™

FRONT BACK UP POLYMER SIGHT

Polymer Flip up Front Sight with standard iron sight elevation adjustment mounts onto a 1913 Picatinny Rail. Will accept any standard front post blade. Standard front sight tool is required with each click equaling the standard 1/4 MOA. Unlike other backup sights MFT has developed a shroud that shelters the front post blade from debris and impact damage when not deployed. A slim profile allows the sight to sit under most optics.

- Full elevation adjustment, tool required
- Low profile snag resistant design
- Shroud protects front post blade from debris and impact damage
- Accepts any standard front post blade
- Can fold to the rear, the correct direction if dropped
- Manufactured out of super tough polyamide
- International shipments DO NOT require an export license, this item ships freely



Weight: .5oz **Height:** .879" **Width:** 1.08" **Length:** 2.23" **O.A.** /.6" from top of
BUPSWF- NSN: BUPSWF- NSN:

ENHANCED CHANGES FOR GEN. 2 FRONT SIGHT

- Rail clamp nut redesigned, no stripping out when overtightened.
- Front sight post is steel with manganese phosphate coating.
- Strengthened the threaded insert that carries the front sight post.
- All plastic components have been changed to a higher strength material.
- Retaining pin for the cover redesigned, pin will not slip out of position.

MFT SIGHTS™

REAR BACK UP POLYMER SIGHT

Polymer Flip Up Rear Sight with Windage Adjustment mounts onto a 1913 Picatinny Rail. A flat head screw driver is required to adjust an Infinite MOA. Unlike other backup sights MFT has developed a shroud that shelters the aperture from debris and impact damage when not deployed. A slim profile allows the sight to sit under all current magnifiers and optics.

- Low profile snag resistant design
- Shroud protects aperture from debris and impact damage
- Dual peep, same plane aperture allows for perfect co-witness
- Unique closure with either aperture deployed
- Can fold to the rear, the correct direction if dropped
- Sight works in conjunction with all standard height front sights
- Manufactured out of super tough polyamide
- International shipments DO NOT require an export license, this item ships freely



Weight: .5oz **Height:** .879" **Width:** 1.08" **Length:** 2.23" **O.A.** /.6" from top of
BUPSWR-BNSN:

ENHANCED CHANGES FOR GEN. 2 REAR SIGHT

- Rail clamp nut has been redesigned so that there is no spin out when overtightened.
- Spherical edges of large and small apertures have been reversed as a result of user input.
- All plastic components have been changed to a higher strength material.
- Retaining pin for the cover has been redesigned so that the pin does not slip out of position.



MISSION FIRST
T A C T I C A L

●

Scorched Dark Earth

A

ENGAGE™

AK47 TACTICAL PISTOL GRIP

A combination of fit and function unequaled by the originally supplied AK47 pistol grip. Textured finger swells and a grooved back strap provide a positive grip surface with wet or gloved hands.

- Designed for AKM
- Full-size pistol grip replaces thinner original for a full-fisted hold
- Grip angle replicates M16 while not affecting trigger contact
- Plug retention for one handed storage access
- Finger swells and a grooved backstrap provide a non-slip grip
- Secure water resistant storage compartment
- Customizable storage system with quick access tab diminishes rattle
- 922R compliant

Weight:	2.2oz	Height:	4.048"
---------	-------	---------	--------



ENGAGE™

AK47 INTERCHANGEABLE PISTOL GRIP

A combination of fit and function unequaled by the originally supplied AK47 pistol grip. The grip angle replicates that of the M16, but does not affect the grip-to-trigger dimension. Interchangeable textured finger swells (3) and back straps (3) provide a positive grip surface with wet or gloved hands and allow the user to customize the fit.

- Designed for AKM
- Any combination of interchangeable back straps and finger swells allow for a custom fit for any sized hand
- Grip angle replicates M16 while not affecting trigger contact
- Secure water resistant storage compartment
- Customizable storage system with quick access tab diminishes rattle
- 922R compliant

Weight:	3.5oz	Height:	4.091"
---------	-------	---------	--------



B

TEKKO™

AK47 INTEGRATED RAIL SYSTEM

Replaces the original handguards on the AK47 family of rifles. Lower section installs in the same manner as the original part, while the upper section is easily attached using the included (4) bolts. When installed a stable, rattle-free platform that will not alter the zero capability of optics is insured. Four MIL STD 1913 Picatinny Rails, two full-length upper/lower and two side rails at just over 2 inches, offer options for mounting Picatinny accessories such as optics, lights/lasers, vertical forward grips, bipods, and other rail mounted equipment. The two smaller side rails are easily removed. Included rail cover can be attached to the lower rail to maintain the original design profile.



- Lightweight alternative
- Simplified installation and unique attachment ensure a mounting system that will hold zero during extreme usage
- Lower Picatinny Rail cover offers original AK47 profile
- 922R compliant



TP47IRS	Weight:	9.7oz	Height:	3.322"
---------	---------	-------	---------	--------

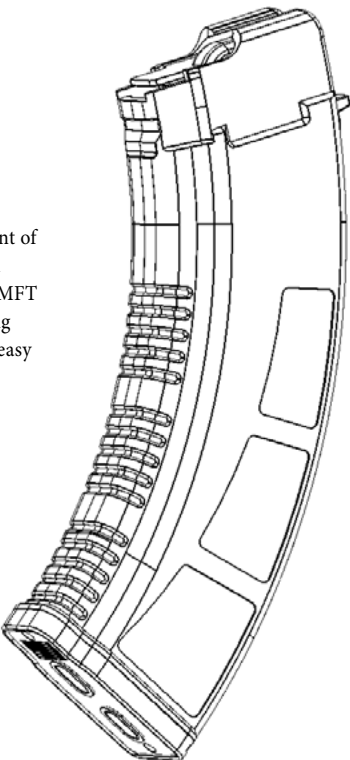
MFT MAGAZINE

AK MAGAZINE 7.62 X 39MM

30 round 7.62x39mm magazine designed for Kalashnikov pattern rifles is engineered as an enhancement of the standard design. The polymer locking lugs are lightweight, sturdy, and highly reliable. The bolt will hold open on the last round fired and there is a fully loaded indicator hole on the magazine body. The MFT stipple texture, low profile front ribs and flared floor plate aid in extraction and handling while allowing under folder stock usage. The floor plate provides drop protection, has a paint pen dot matrix area for easy identification marking and is compatible with tight double and triple magazine pouches. Two fully functional drain holes ensure full and proper draining. Simple tool less disassembly.

- MADE IN THE USA
 - Impact resistant polymer body
 - Bolt Hold Open on last round fired
 - Anti-tilt, self-lubricating follower
 - Long-life stainless steel spring
 - MFT stipple texture
- Low profile ribs front texture
 - Flared Floor Plate
 - Paint Pen dot matrix on floor plate
 - Drain holes
 - Toolless disassembly

Weight:	N/A	Height:	N/A
---------	-----	---------	-----



MFT GEAR & APPAREL



GEAR UP

- STICKERS
- SHIRTS
- HATS
- PATCHES
- DRINKWARE
- BAGS
- WALLET
- EDC DUMP TRAYS

VISIT MISSIONFIRSTTACTICAL.COM
FOR FULL LINE OF GEAR





MFT DRINKWARE
M18 RED SMOKE TUMBLER

Pop smoke and pour your favorite hot brew, iced drink or tasty beverage into the mft tumbler. Keeps your drink hot (4 hrs)/cold (9 hrs) for maximum enjoyment. STAY HYDRATED and always mark the LZ.

- 4 hours hot / 9 hours cold
- Double Walled
- Triple Insulated
- Sweat Proof
- 18/8 Stainless Steel
- BPA and Toxin Free
- Dishwasher Safe/ Handwash recommended

DM18R-12	Evac 12oz Flip Top M18 Red Smoke
DM18R-16	Evac 16oz Flip Top M18 Red Smoke
DM18R-25	Evac 24oz Bottle M18 Red Smoke



MFT DRINKWARE
M7A3 RIOT CS TUMBLER

Keep your cool.
Temporarily incapacitate the heat from ruining your crisp canned beverage. The MFT flip top keeps your drink cold, so you can keep your cool.
Easily keeps your drink hot or cold for hours of maximum enjoyment!

- 4 hours hot / 9 hours cold
- Double Walled
- Triple Insulated
- Sweat Proof
- 18/8 Stainless Steel
- BPA and Toxin Free
- Dishwasher Safe/ Handwash recommended

DM18CS-12	12oz Flip Top M18 CS
DM18CS-16	16oz Flip Top M18 CS
DM18CS-25	24oz Bottle M18 CS



MFT DRINKWARE
155MM M107 HOWITZER TUMBLER

Just send it!
Crack open your favorite beverage and load it into the MFT flip top. Keeps your drink cold and accurate so you can always hit your target.
Easily keeps your drink hot or cold for hours of maximum enjoyment!

- 4 hours hot / 9 hours cold
- Double Walled
- Triple Insulated
- Sweat Proof
- 18/8 Stainless Steel
- BPA and Toxin Free
- Dishwasher Safe/ Handwash recommended

DM107-12	12oz Flip Top 155mm M107 Howitzer
DM107-16	16oz Flip Top 155mm M107 Howitzer
DM107-25	24oz Bottle 155mm M107 Howitzer



MFT DRINKWARE
CAN COOLER

Just send it!
Keep your favorite beverage hot or cold for hours!

- 4 hours hot / 9 hours cold
- Double Walled
- Triple Insulated
- Sweat Proof
- 18/8 Stainless Steel
- BPA and Toxin Free
- Dishwasher Safe/ Handwash recommended

DM18R-CAN	12oz Can Cooler Tumbler M18 Red Smoke
DM18CS-CAN	12oz Can Cooler Tumbler M18 CS
DM107-CAN	12oz Can Cooler Tumbler 155mm M107



MFT BAGS

AMBUSH 40 BACKPACK

The Ambush 40 is a robust backpack, designed for multipurpose use. Carry all your things comfortably and securely. Made from 600 Denier Ballistic Nylon for outstanding durability. Outfitted with EVA back padding and thick shoulder straps for endless comfortable carrying. A padded laptop sleeve keeps your computer protected. Perfect for long hikes, camping, and various outdoor needs. Ideal for the user that requires ample space to carry gear. The Ambush 40 can carry it all!

- 40 Liter
 - 600 Denier Ballistic Nylon PVC Backed
 - ITW Buckles
 - Heavy Duty #10 zippers
 - 12 mm EVA Padded Back Panel
- Interior Mesh Pocket
 - Sunglass Compartment
 - Padded Shoulder Straps
 - Utility Pocket
 - MOLLE sections for expanded attachment options

Weight:

2.7lbs

Height: 19"

Width: 14"

B1-A5BP-BL **Black**

B1-A5BP-TN **Desert Sand**

Desert Sand

Moss Green



Padded



ITW Buckles



Utility Pocket



Sunglass

MFT BAGS

DRC DOUBLE RIFLE CASE

Designed with the avid shooter in mind. Carry your long guns, pistols, and range supplies with ease while keeping them secure and protected.

- Two sizes offered (36" and 42")
 - 600 Denier Ballistic Nylon PVC Backed
 - ITW Buckles
 - Heavy Duty #10 Zippers
 - Padded Rifle Divider
- Padded Optic Protector
 - Backpack Shoulder Straps
 - Pistol Storage Compartment
 - Multiple Storage Compartments
 - MOLLE sections for expanded attachment options

36" DRC DOUBLE RIFLE

Weight:

5.5lbs

Height: 13"

Width:

B1-DRC-36 **Black**

B1-DRC-36-TN **Desert Sand**

42" DRC DOUBLE RIFLE

Weight:

6.45

Height: 13"

Width:

B1-DRC-42 **Black**

B1-DRC-42-TN **Desert Sand**

Desert Sand

Moss Green



Padded Rifle



Pistol Storage



Backpack



ITW Buckles

MFT BAGS
MUG MULTI UTILITY BAG

The MUG is the ideal, heavy duty carry option. Excellent for tools, boxes of ammunition and various admin gear. Made with 600 Denier and a reinforced hard bottom. This bag is built like a tank and will allow you to carry your heavy equipment with confidence.

- Ammo Carrier
- Tool Bag
- Utility Organizer
- 600 Denier Ballistic Nylon PVC Backed
- Heavy Duty #10 Zippers
- Hard Bottom
- Heavy Duty Handles

B1-MUG-BL **Weight: 2.3** **Height: 8"** **Width: 17"** **Depth:**



Tool Storage



Ammo Carrier



Heavy Duty #10

MFT BAGS
TPC TWO PISTOL CARRIER

The TPC is the perfect companion to carry your pistols. With simple dividers and magazine storage, the TPC will keep your sidearms protected and organized during your trips to the range.

- Fits Two Pistols
- Subcompact and Full Size
- Thick Padded Divider
- Ammo/Magazine Storage
- Accepts Security Lock
- 600 Denier Ballistic Nylon PVC Backed

Weight: B1-TPC **Black**
1.5lbs
Height: B1-TPC-TN
10"

Desert Sand



MFT BAGS
WARRIOR 30 BACKPACK

The Warrior 30 is a robust, yet compact backpack, designed for multipurpose use. Perfect as a bugout bag, vehicle bag or simply hitting the hiking trails. Made from 600 Denier Ballistic Nylon for outstanding durability. Outfitted with EVA back padding and thick shoulder straps for endless comfortable carrying. The Warrior 30 will carry your gear with ease.

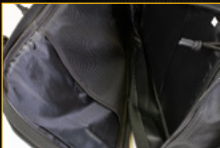
- 30 Liter
- 600 Denier Ballistic Nylon PVC Backed
- ITW Buckles
- Heavy Duty #10 Zippers
- 12 mm EVA Back Pad
- Interior Mesh Pocket
- Sunglass Compartment
- Padded Shoulder Straps
- Utility Pocket/Admin Pockets
- MOLLE sections for expanded attachment options

Weight: B1-W3BP-BL
2.45lbs **Black**
Height: 19" B1-W3BP-TN
Width: 12"

Desert Sand Moss Green



Utility Pocket/Admin



Interior Mesh



Padded Shoulder



Sunglass

155H
TNT
MFT 411CD-18
HELLM107
SUPPLY CHG
2BLAM



MISSION FIRST
T A C T I C A L

MISSIONFIRSTTACTICAL.COM

INFO@MFTLTD.COM 267.704.0001