



MISSION FIRST
TACTICAL

WELCOME TO *MFT*

Success of the Mission is what every brave individual operating in harm’s way strives for. Success of the Mission is so fundamental to us, we named our company Mission First Tactical. MFT designs and develops select U.S.A. made rifle/carbine accessories and Kydex-style, Boltaron® material holsters handmade by Veterans specifically for the Military, Law Enforcement, and Civilian markets. The MFT team has over 75 years of industry experience in taking concepts to front-line deployment. From the beginning, MFT’s mission is to develop leading-edge products for individuals operating in harm’s way. Success for every operator’s mission is Mission First Tactical’s priority.

Development and manufacturing processes are accomplished entirely in the U.S.A.



^{MFT} NEW PRODUCTS	4
^{MFT} HOLSTERS	6
^{MFT} WALLETS & DUMP TRAYS	8
^{MFT} PEPPER SPRAY	12
MAGAZINES	14
^{BATTLELINK™} STOCKS	22
^{BATTLELINK™} STOCK ADD ONS	28
^{ENGAGE™} PISTOL GRIPS	30
^{REACT™} VERTICAL GRIPS	34
^{TEKKO™} RAIL SYSTEMS	36
^{E-VOLV™} MUZZLE DEVICES	48
^{E-VOLV™} E-VOLV™ ADD-ON	50
^{MFT/TORCH™} SIGHTS & LIGHTS/MOUNTS	51
^{MFT} SLINGS/MOUNTS	52
^{MFT} BACK UP SIGHTS	54
^{MFT} AK47 RAILS/GRIPS	56
^{MFT} LIFESTYLE	58

MFT *NEW* PRODUCTS



**EXTREME DUTY WINDOW 5.56
POLYMER MAG**

Now Shipping, pg 14



**EXTREME DUTY
MINIMALIST STOCK**

Now Shipping, pg 23.



**DECORATED EXTREME DUTY
POLYMER 5.56 MAG**

Now Shipping, pg 15



MINIMALIST HOLSTER

Now Shipping, pg 7



IWB HOLSTER

Now Shipping, pg 6



RAPID STRIKE PEPPER SPRAY

Now Shipping, pg 12



WALLETS

Now Shipping, pg 8



**BATTLINK MINIMALIST
PISTOL STABILIZER**
COMING SOON



DUMPTRAYS

Now Shipping, pg 9

IN-STORE *DISPLAYS*

BARREL O'MAGS

400 MFT Extreme Duty Mags, 30 round AR15 5.56x45mm Bagged ready to go in their own sales bin. Roll the barrel into place and pop the lid, this bad ass barrel will complete the tactical look your aisle needs!

(10 & 15 round versions available)

AMMO CRATE DUMP BIN

100 MFT Extreme Duty Polymer Mags, 30 round AR15 5.56x45mm Bagged ready to go in their own sales bin. Drop the crate into place, pop the lid, and insert the header. This badass ammo crate will complete the look your aisle needs!

(10 & 15 round versions available)

IN-STORE DISPLAY

Mission First Tactical's In Store Display comes free-of-charge with your order. Our Top 10 items are included along with a balanced assortment of rifle accessories.

HOLSTER DISPLAY

Mission First Tactical's In Store Display comes free-of-charge with your order. It holds 12 different SKUs 3 deep for a total of 36 units. Pick your assortment or take a look at what we recommend.

PEPPER SPRAY

Mission First Tactical's Rapid Strike Pepper Spray Display. Additional Displays available.



EXDPM556BBL

EXDPM556ACD

MFTBIGDISPLAY19

MFTHDISPLAY19

MFT HOLSTERS
VERSATILE IWB/OWB HOLSTER

A versatile AIWB, IWB or OWB capable of use both in right and left-hand positioning on your strong side, outside, inside your waistband, or appendix carry. Handmade by Veterans to exacting tolerances for each model of handgun using the most advanced techniques and materials. A superior .08 Boltaron® combined with MFT's proprietary production methods yields holsters offering better detail, cleaner edges and longer service life. Adjustable retention and the famous audible "click" makes each draw and re-holstering smooth and secure. All units are compatible with a comfort carry paddle for OWB conversion and come standard with a 1.5" Belt

- Adjustable cant to over 15%
- Ambidextrous hole patterns for right or left-handed carry
- Molded, Trimmed, Assembled and Buffed by Hand
- Comfortable for Constant Wear
- Most Models are designed RMR compatible
- Tall Height Sight Track compatible with Suppressor Sights etc



AMBIDEXTROUS



RETENTION



MFT HOLSTERS
OWB HOLSTER

OWB Outside the Waistband holster- "A standard reinvented"

A versatile Outside the Waist Band (OWB) capable of being converted to an Inside the Waist Band (IWB) for strong side carry. Body hugging curved wings spread firearm weight for great comfort & aid in concealment. Handmade by Veterans to exacting tolerances for each model of handgun using the most advanced techniques and materials. A superior .08 Boltaron® combined with MFT's proprietary production methods yields holsters offering better detail, cleaner edges and longer service life. Adjustable retention and the famous audible "click" makes each draw and re-holstering smooth and secure. All units are compatible with belt clips for IWB conversion and come standard with a 1.5" Belt Loops.

- Molded, Trimmed, Assembled and Buffed by Hand
- Adjustable Rise, Adjustable Cant (0 to 15 degrees)
- Laser CAD Design, Smooth Draw, Less Wear
- Passive retention audible click
- Right Hand Carry
- Fits RMR reflex sights
- Weighs 3.6 ounces



CURVED COMFORT



SWEAT GUARD



MFT
HOLSTER ACCESSORIES - SOLD SEPARATELY



PADDLE - Convert your Versatile IWB to an OWB. Easy on off, fits 1.5" belts.



BELT CLIP - IWB - 1.5". Angled for better belt retention. Wide style for stability. Extended finger tab for easy on off.



BELT CLIPS - OWB- 1.5" & 1.75". Extended finger tab for easy on off. For IWB or OWB use. Min - 1.5" - Tuckable. Cant adjustable



OWB BELT LOOPS - 1.5" & 1.75"

MFT HOLSTER
FEATURES:



LASER CAD



ADJUST CANT



SIGHT CHANNEL



RED DOT



VETERANS



BOLTARON®

THE ALL NEW MFT HOLSTER

MADE IN
USA

MFT HOLSTERS
MINIMALIST HOLSTER

LIFETIME
WARRANTY

MADE IN
USA

HAND
CRAFTED
BY VETERANS

The Minimalist was designed to give a low profile IWB holster all the performance and reliability of a full-size holster. The tuckable clip is reversible for both left and right-handed shooters. The cant is adjustable up to 20 degrees and accommodates 1" to 1.5" belt. The claw, for right handed shooters, keeps the heel of the firearm pressed into your side minimizing its print.

WARNING, for safety reasons you must remove the Minimalist from your belt for reholstering. You can then safely secure it back onto the belt.

- Appendix, Inside the Waistband IWB
- Ambidextrous - Wearable Right or Left-hand
- Includes 1.5" Belt Clip
- Ideal for Concealed Carry
- Adjustable Cant 0 - 15 degrees
- Audible Passive Retention
- Superior .08 Boltaron™ material
- Laser CAD Design for Perfect fit, Smoother Draw, Less Wear
- Claw - Maximizes concealment
- Quality Screws, Rivets and Attachments
- Sculpted for RMR (reflex red dot sights)
- Tall Sight Channel - Open Muzzle



MFT HOLSTERS
MAG POUCHES

Mag Pouches - Single, Double and Rifle

Available in both Single and Double. Versatile Outside the Waist Band (OWB) capable of being converted to a Inside the Waist Band (IWB) for strong side carry. Body hugging curved wings spread firearm weight for great comfort & aid in concealment. Handmade by Veterans to exacting tolerances for each model of handgun's magazines using the most advanced techniques and materials. A superior .08 Boltaron® combined with MFT's proprietary production methods yields holsters offering better detail, cleaner edges and longer service life. Adjustable retention makes each draw and re-holstering smooth and secure. All units are compatible with belt clips for IWB conversion. Double comes standard with a 1.5" Belt Loops. Single comes standard with 1.5" Belt Clip.

- Flared Opening
- Adjustable Retention
- 1.5" Belt Clip
- Molded, Trimmed, Assembled and Buffed by Hand
- Laser CAD Design for Perfect Fit, Smoother Draw, Less Wear
- Ambidextrous

LIFETIME
WARRANTY

MADE IN
USA

HAND
CRAFTED
BY VETERANS



Minimalist Wallet

Stay Organized and carry only what you need with this slim and comfortable wallet. 2 sizes available. Securely store and easily access up to 8 Credit Cards or 15 business cards or 15 credit cards or 25 business cards depending on the size purchased. Designs are chemically bonded to ensure wear and scratch resistance.

- 2 Sizes 8 or 15 Credit Card
- Slim Walle
- EDC - Every Day Carry
- Superior .08 Boltaron™ material
- Handmade by Veterans
- Made in the USA



EDC Dump Tray

A convenient place to drop all your everyday carry (EDC) items when you walk in the door or sit down at your desk. Small compartment designed for your phone or small items with a larger area for everything else. Overall 8.2" x 11.2", small area 3.5"x7" and large area 6"x7". Designs are chemically bonded to ensure wear, scratch and chemical resistance. Handcrafted from Boltaron Material in the United States of America!

- Superior .08 Boltaron™ material
- Handmade by Veterans
- Made in the USA



MFT PEPPER SPRAY

OC/UV -Level 3 10% OC - 1.33% T.C. 2,000,000 Scoville Heat Units
Maximum effectiveness and stopping power
Same formulation used by the US Army & Air Force.
Manufactured in a Department of Defense approved facility
Identify your attacker with an ultraviolet dye, visible under a black light
Independent High Performance Liquid Chromatography testing ensures consistent performance
Stores safely for 5 years
Carry in Pocket
Effective up to 10 ft
Spray Up to 35 Times
Stream: Focused pattern with longest distance. Good wind resistance, minimal cross contamination.

When it comes to your self-defense don't gamble. Rapid Strike pepper spray inhibits your attacker while causing extreme discomfort/pain to eyes, throat and respiratory system - allowing you to escape harm. Manufactured with the same formula used by the US Army & Airforce in a Department of Defense approved facility. Proven to be the very best in a blind test conducted by the USMilitary.

RAPID  STRIKE

WHAT'S YOUR SAFETY WORTH?

When it comes to your self-defense don't gamble. Manufactured with the same formula used by the US Army & Airforce in a Department of Defense approved facility, proven to be the very best in a blind test conducted by the US Military.



MAXIMUM STRENGTH
Maximum effectiveness and stopping power.



US MILITARY FORMULA
Same formulation used by the US Army & Air Force. Manufactured in a Department of Defense approved facility.



FORMULATION
OC/UV -Level 3 10% OC - 1.33% T.C.
or CS/OC/UV -Level 3 - 2% CS- 10% OC - 1.33% T.C.
2,000,000 Scoville Heat Units



UV IDENTIFIER
Identify your attacker with an ultraviolet dye, visible under a black light.



CHROMATOGRAPHY (HPLC)
Independent High Performance Liquid Chromatography testing ensures consistent performance.



5 YEAR SHELF-LIFE
Stores safely for 5 years.

THREE DELIVERY METHODS:

Stream

Focused pattern with longest distance. Good wind resistance, minimal cross contamination.

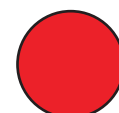
Gel

Focused pattern with long distance. Least chance of cross contamination, use where cross contamination could be an issue.

Fog

Wide pattern with mid distance, fastest disbursement. Wind can affect it but easiest to aim. Will cross contaminate indoors.

TWO FORMULAS:



OC PEPPER/UV DYE



CS TEAR GAS AND OC PEPPER/UV DYE

COLOR SELECTION:



BLACK



PINK



POCKET CLIP R1



SPORT MODEL R2



SLIM LINE R3



HARD CASE R4



QUICK DETACH KEY RING R5



MARK III R8





EXTREME DUTY WINDOW MAGAZINES

MFT MAGAZINES

EXTREME DUTY WINDOW 5.56 POLYMER MAG

Utilizing new material technology and manufacturing processes for enhanced strength, durability, and reliability to exceed demanding military performance specifications. Durable dual-side anti-glare transparent windows with numerical markers and high viability indicator coil on the spring allow quick visual identification of the approximate number of mags remaining. Designed for the AR15/M4 but allowing use with a wide range of non-AR15/M4 platforms.

- Next Generation Long Glass Fiber Polymer.
- Enhanced Strength & Durability.
- Ribbed front and rear gripping surface.
- Long-life USGI-spec stainless steel spring.
- Four-way anti-tilt self-lubricating follower.
- Flared floor plate.
- Oversized bolt catch.
- Paint Pen dot matrix.
- Tool-less disassembly with double floor plate safety release tabs

EXDPM556W Weight: N/A Height: 7.49" Width: .940" Length: 2.525"



EXTREME DUTY DECORATED MAGAZINES

MFT MAGAZINES

EXTREME DUTY DECORATED 5.56 POLYMER MAG

Utilizing new material technology and manufacturing processes for enhanced strength, durability, and reliability to exceed demanding military performance specifications. Designed for the AR15/M4 but allowing use with a wide range of non-AR15/M4 platforms.

- 50% Stronger
- 3x More Impact Resistant than traditional nylons
- Next Generation Long Glass Fiber Polymer
- Enhanced Strength & Durability
- Ribbed front and rear gripping surface
- Long-life USGI-spec stainless steel spring
- Four-way anti-tilt self-lubricating follower
- Flared floor plate
- Oversized bolt catch
- Paint Pen dot matrix
- Tool-less disassembly with double floor plate safety release tabs

EXDPM556D Weight: N/A Height: 7.49" Width: .940" Length: 2.525"





EXTREME DUTY MAGAZINES

MFT MAGAZINES

EXTREME DUTY 5.56 POLYMER MAG

Utilizing new material technology and manufacturing processes for enhanced strength, durability, and reliability to exceed demanding military performance specifications. Designed for the AR15/M4 but allowing use with a wide range of non-AR15/M4 platforms

- Next Generation Long Glass Fiber Polymer.
- Enhanced Strength & Durability.
- Ribbed front and rear gripping surface.
- Long-life USGI-spec stainless steel spring.
- Four-way anti-tilt self-lubricating follower.
- Flared floor plate.
- Oversized bolt catch.
- Paint Pen dot matrix.
- Tool-less disassembly with double floor plate safety release tabs

EXDPM556 Weight: N/A Height: 7.49" Width: .940" Length: 2.525"

● Scorched Dark Earth



MFT MAGAZINES

STANDARD CAPACITY 30 ROUND MAGAZINE

30 round 5.56 NATO magazine engineered as an enhancement of the standard STANAG design. The MFT stipple texture, low profile front ribs and flared floor plate aid in extraction and handling. The floor plate provides drop protection, has a paint pen dot matrix area for easy identification marking and is compatible with tight double and triple magazine pouches. Two fully functional drain holes ensure full and proper draining. Simple toolless disassembly

with double floor plate safety release tabs allows user to safely release spring tension during disassembly and quick ammo dumps. Long-life stainless steel spring and four-way anti-tilt follower ensure reliable feeding. Oversized bolt catch notch in the rear of the magazine provides enhanced reliability of the bolt catch operation. Quality and consistency are ensured by using a specially developed, reinforced, and super tough polyamide.

- MFT stipple texture
- Low profile ribs front texture
- Flared floor plate
- Paint pen dot matrix floor plate
- Drain holes
- Quick ammo dump
- Long-life stainless steel spring
- Four-way anti-tilt follower

● Camo Grey Mil Spec Pantone 36170 ● Foliage Green Mil Spec Pantone 34160 ● Flat Dark Earth Mil Spec Pantone 20270 ● Scorched Dark Earth

SCPM556

Weight: 3.8 oz
Height: 8.79"
Width: 1.125"
Length: 2.25"



MFT MAGAZINE

10 ROUND CAPACITY MAGAZINE

10 round 5.56 NATO magazine engineered as an enhancement of the standard STANAG design. 10 round maximum capacity due to internal limiter. The bottom of the magazine is PERMANENTLY sealed and cannot be readily restored. Gray follower buttons indicate 20 round block. MFT stipple texture, low profile front ribs and flared floor plate aid in extraction and handling. The floor plate provides drop protection, has a paint pen dot matrix area for easy identification marking and is compatible with tight double and triple magazine pouches. One fully functional drain hole ensures full and proper draining. Long-life stainless steel spring and four-way anti-tilt follower ensure reliable feeding. Oversized mag catch notch in the rear of the magazine provides enhanced reliability of the bolt catch operation.

- 10 round maximum capacity
- Permanently sealed / cannot be restored to full 30 round magazine
- Gray follower buttons indicate 20 round block
- MFT stipple texture
- Low profile front ribs front texture
- Flared floor plate
- Paint pen dot matrix on floor plate
- Drain hole
- Long-life stainless steel spring
- Four-way anti-tilt follower
- Oversized mag catch



10/30PM556 Weight: 4.8 oz Height: 8.79" Width: 1.125" Length: 2.25"

Scorched Dark Earth



*Magazine cutout for illustration purposes only.

20
ROUND
INTERNAL
LIMITER

MFT MAGAZINE

15 ROUND CAPACITY MAGAZINE

15 round 5.56 NATO magazine engineered as an enhancement of the standard STANAG design. 15 round maximum capacity due to internal limiter. The bottom of the magazine is PERMANENTLY sealed and cannot be readily restored. Red follower buttons indicate 15 round block. MFT stipple texture, low profile front ribs and flared floor plate aid in extraction and handling. The floor plate provides drop protection, has a paint pen dot matrix area for easy identification marking and is compatible with tight double and triple magazine pouches. One fully functional drain hole ensures full and proper draining. Long-life stainless steel spring and four-way anti-tilt follower ensure reliable feeding. Oversized mag catch notch in the rear of the magazine provides enhanced reliability of the bolt catch operation.

- 15 round maximum capacity
- Permanently sealed / cannot be restored to full 30 round magazine
- Red follower buttons indicate 15 round block
- MFT stipple texture
- Low profile front ribs front texture
- Flared floor plate
- Paint pen dot matrix on floor plate
- Drain hole
- Long-life stainless steel spring
- Four-way anti-tilt follower
- Oversized mag catch



15/30PM556 Weight: 4.8 oz Height: 8.79" Width: 1.125" Length: 2.25"

Scorched Dark Earth



*Magazine cutout for illustration purposes only.

15
ROUND
INTERNAL
LIMITER



MFT MAGAZINE

10 ROUND CAPACITY MAGAZINE

10 round 5.56 NATO magazine engineered as an enhancement of the standard STANAG design. A flared floor plate aids in extraction and handling. The floor plate provides drop protection, has a paint pen dot matrix area for easy identification marking. Two fully functional drain holes ensure full and proper draining. Simple toolless disassembly with double floor plate safety release tabs allows user to safely release spring tension during disassembly and quick ammo dumps. Long-life stainless steel spring and four-way anti-tilt follower ensure reliable feeding. Oversized bolt catch notch in the rear of the magazine provides enhanced reliability of the bolt catch operation.

- Toolless disassembly with double floor plate safety release tabs
- Paint pen dot matrix on floor plate
- Long-life stainless steel spring
- Four-way anti-tilt follower
- Flared floor plate
- Oversized bolt catch
- Drain holes

10PM556 Weight: 2.3 oz Height: 3.66" Width: 1.03" Length: 2.70"

- Camo Grey Mil Spec Pantone 36170
- Foliage Green Mil Spec Pantone 34160
- Scorched Dark Earth



MFT MAGAZINE

5 ROUND POLYMER MAG

5 round 5.56 MATO magazine engineered as an enhancement of the standard Stanag design. 5 round maximum capacity due to internal limiter. The bottom of the magazine is PERMANENTLY sealed and cannot be readily restored. Orange follower buttons indicate 5 round block. MFT stipple texture, low profile front ribs and flared floor plate aid in extraction and handling. The floor plate provides drop protection, has a paint pen dot matrix area for easy identification marking and is compatible with tight double and triple magazine pouches. One fully functional drain hole ensures full and proper draining. Long-life stainless steel spring and four-way anti-tilt follower ensure reliable feeding. Oversized mag catch notch in the rear of the magazine provides enhanced reliability of the bolt catch operation. 5 round maximum capacity

- 5 Round Capacity
- MFT stipple texture
- Flared floor plate
- Paint pen dot matrix on floor plate
- Drain hole
- Long-life stainless steel spring
- Four-way anti-tilt follower
- Oversized mag catche

5/10PM556 Weight: 4.8 oz Height: 8.79" Width: 1.125" Length: 2.25"

- Camo Grey Mil Spec Pantone 36170
- Foliage Green Mil Spec Pantone 34160
- Scorched Dark Earth



MFT MAGAZINE

MAG FLOOR PLATE

Polymer Magazine Floor Plate is designed for use with the MFT's SCPM556 and 10PM556 magazines. Set of 6, easily recognizable colors include Red, Orange, Yellow and Green. Great for 3 gun competitions, prepper storage and law enforcement officers. For anyone who uses more than one brand, bullet weight, or round count of ammunition and/or multiple caliber rifles. Color is the simplest way to identify your magazines.

- For use with MFT's SCPM556 & 10PM556
- Paint pen dot matrix
- Flared floor plate

PM556FP NA



SUPERIOR PERFORMANCE • SUPERIOR PRICING • VERSATILE DISPLAYS

MAGAZINE

DISPLAYS

MFT MAGAZINES

10 PACK OF MAGS

Customers having a hard time carrying mags to the counter? Make it easy for them with the 10 Pack of Mags! 10 MFT Standard Capacity Polymer Magazines packed out in a rugged Ammo Can Style cardboard box!



MFT MAGAZINES

50 PACK AMMO CRATE

You can never have enough mags, that's why we decided to build a mini ammo crate packed out with 50 MFT Standard Capacity Polymer Magazines. Load up your mags and store inside.



MFT MAGAZINE

BARREL O'MAGS

400 MFT Extreme Duty Polymer Mags, 30 round AR15 5.56x45mm bagged ready to go in their own sales bin. Roll the barrel into place and pop the lid, this bad ass barrel will complete the tactical look your aisle needs!



MFT MAGAZINE

AMMO CRATE DUMP BIN

100 MFT Extreme Duty Polymer Mags, 30 round AR15 5.56x45mm Bagged ready to go in their own sales bin. Drop the crate into place, pop the lid and insert the header. This bad ass ammo crate will complete the look your aisle needs!



Manufactured using a specially developed reinforced, super tough polyamide, BATTLELINK™ Stocks are the evolution of battlefield technology.



BATTLELINK™ MINIMALIST STOCK

All of the functional requirements are met while keeping the weight under 6 ounces. This stock adapts and changes to your environment or operational needs by utilizing custom accessory mounts and accepts a new optimized sling configuration. The lightest stock of its kind in the market.

- Slide-on replacement for collapsible butt stock
- Angled non-slip rubberized buttpad allows faster presentation, even with body armor
- Multiple Sling Slots with single point mounting
- Quick Detach Sling mounting point is positioned for optimum usage including ambidextrous shooters
- Upper section provides enhanced cheek weld

Weight: 5.8oz
Height: 5.223"
Width: 1.752"
Length: 7.084"

BMS Commercial
BMSMIL MilSpec
BMST Tube assembly (BMST kit includes: 6 position buffer tube; spring; buffer; lock ring; latch plate)



Roll pin included to pin stock in place once location is determined by the end user for compliance, firearm DOES NOT need to be altered.

BMSRSC Commercial **BMSMILRSC** MilSpec



Camo Grey Mil Spec Pantone 36170
Foliage Green Mil Spec Pantone 34160
Flat Dark Earth Mil Spec Pantone 20270
Scorched Dark Earth

BATTLELINK™ EXTREME DUTY MINIMALIST STOCK

Battlelink Minimalist Stock Extreme Duty.

Building on our popular minimalist platform we recognized the need for a more robust stock capable of withstanding long term abuse delivered by larger caliber firearms such as tactical shotguns of 12 gauge or 7.62X51 AR-10 while remaining nimble enough for use on a 5.56.

- Slide-on replacement for collapsible butt stock
- Angled non-slip rubberized removable buttpad allows faster presentation, even with body armor
- Multiple Sling Slots with single point mount points
- Quick Detach Sling mounting point is positioned in the rear
- Upper section provides enhanced cheek weld
- Single MLOK connection point.



Camo Grey Mil Spec Pantone 36170
Foliage Green Mil Spec Pantone 34160
Flat Dark Earth Mil Spec Pantone 20270
Scorched Dark Earth





BATTLELINK™

MINIMALIST STOCK W/ NRAT STRAP

Approximately 8 feet of Paracord braided in a regular weave directly onto a Battlelink™ Minimalist Stock adds only a half an ounce. The strap will not interfere with the use of the QD mount or its benefit to ambidextrous shooters.

- Slide-on replacement for collapsible butt stock
- Angled non-slip rubberized buttpad allows faster presentation, even with body armor
- Multiple Sling Slots with single point mounting
- Quick Detach Sling mounting point is positioned for optimum usage including ambidextrous shooters
- Upper section provides enhanced cheek weld

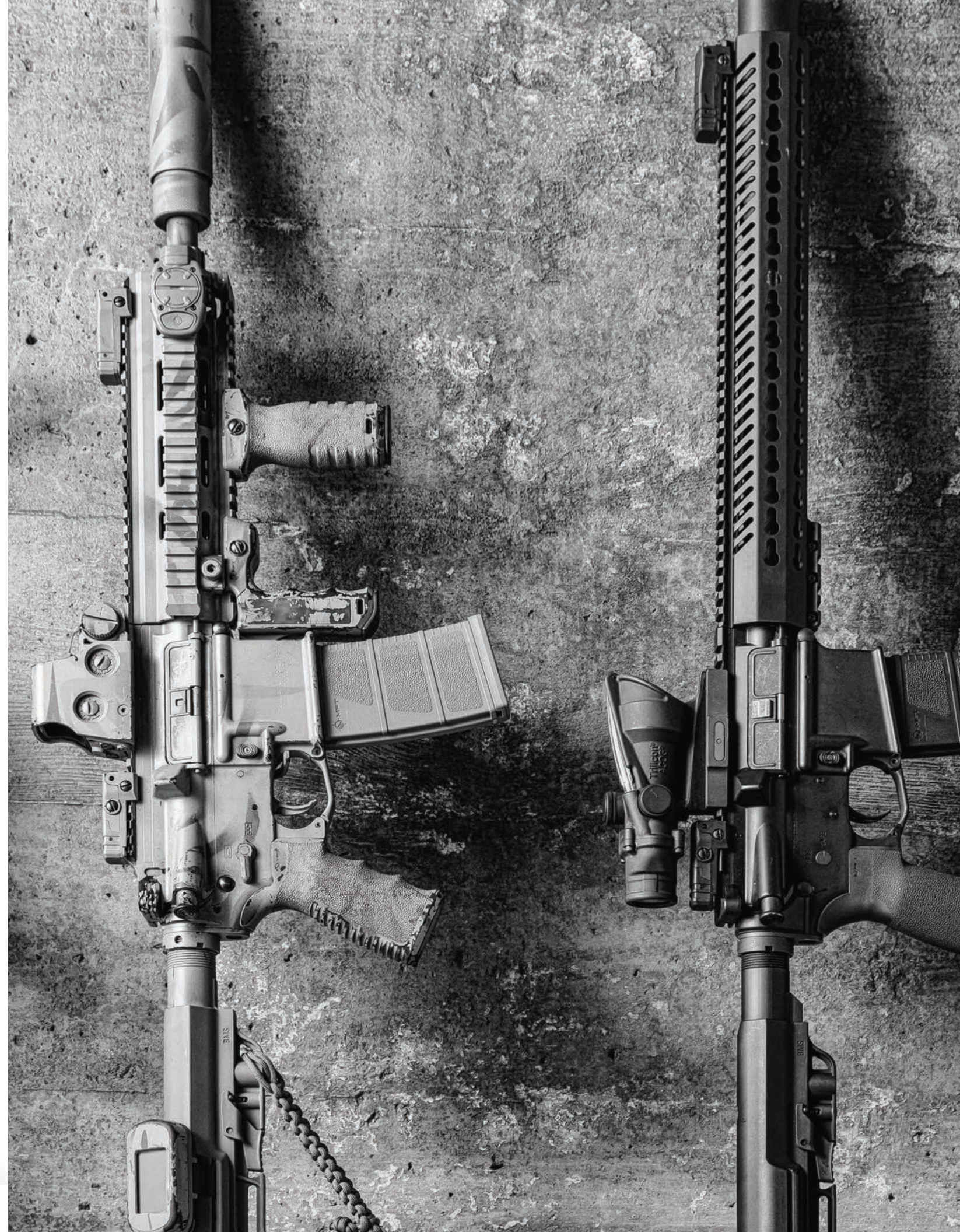
Weight: 6.3oz
Height: 5.223"
Width: 1.752"
Length: 7.084"

BMSNRAT Commercial
BMSMILNRAT Milspec



MADE IN
USA
✓ LIFETIME
WARRANTY

Camo Grey
Mil Spec
Pantone 36170
 Foliage Green
Mil Spec
Pantone 34160
 Flat Dark Earth
Mil Spec
Pantone 20270
 Scorched Dark Earth



BATTLELINK™ UTILITY STOCK

Adapts and changes based on your environment or operational needs, from storing additional items in the rear compartment to utilizing custom accessory mounts.

- Slide-on replacement for original collapsible butt stock
- Angled non-slip buttpad allows faster presentation, even with body armor
- Pivoting rear accessed large and water resistant storage compartment
- Customizable foam storage block with quick access tab diminishes rattle
- Quick Detach Sling mounting points (2) are positioned for optimum usage
- Multiple Sling Slots
- Upper section provides enhanced cheek weld
- Accessory mounting provisions

Weight: 9.01oz **BUS** Commercial
Height: 5.224" **BUSMIL** Milspec
Width: 1.752" **BUST** Tube assembly (BUST kit includes: 6 position
Length: 7.345" buffer tube; Spring; Buffer; Lock ring; Latch Plate



● Camo Grey Mil Spec Pantone 36170
 ● Foliage Green Mil Spec Pantone 34160
 ● Flat Dark Earth Mil Spec Pantone 20270
 ● Scorched Dark Earth

BATTLELINK™ LOW PROFILE STOCK

Low profile version of the Utility Stock; adapts and changes based on your environment or operational needs, from storing additional items in the rear compartment to utilizing custom accessory mounts.

- Slide-on replacement for original collapsible butt stock
- Angled non-slip buttpad allows faster presentation, even with body armor
- Pivoting rear accessed large and water resistant storage compartment
- Customizable foam storage block with quick access tab diminishes rattle
- Quick Detach Sling mounting points (2) are positioned for optimum usage
- Multiple Sling Slots
- Upper section provides enhanced cheek weld
- Accessory mounting provisions

Weight: 8.75oz **BULS** Commercial
Height: 5.224" **BULSMIL** Milspec
Width: 1.752" **BULST** Tube assembly (BULST kit includes: 6 position
Length: 7.345" buffer tube; Spring; Buffer; Lock ring; Latch Plate



● Camo Grey Mil Spec Pantone 36170
 ● Foliage Green Mil Spec Pantone 34160
 ● Flat Dark Earth Mil Spec Pantone 20270
 ● Scorched Dark Earth

MFT STOCK ADD ONS

BATTLELINK™



- Camo Grey
Mil Spec
Pantone 36170
- Foliage Green
Mil Spec
Pantone 34160
- Flat Dark Earth
Mil Spec
Pantone 20270
- Scorched Dark Earth

BATTLELINK™

ADJUSTABLE CHEEK PIECE

The solution to varying heights of mounted optics. Easily and quickly adjusts to provide optimal eye-to-optic focus and a strong cheek weld contact position. Allows the full usage of the AR15 charging handle due to the built-in limiting stop that insures interference-free operation of the rifle.

- Stable shooting platform with 1.25 inch of travel
- Charging handle can be operated with cheek piece in any position other than indicated by stop
- Designed for use with Battlelink™ Utility Stock Series

BACP	Weight: 2.72oz	Height: 4.069"	Width: 2.190"	Length: 5.546"
------	----------------	----------------	---------------	----------------



MADE IN
USA

LIFETIME
WARRANTY

E-VOLV™

BATTLE STOCK ATTACHMENT

Securely mounts to the standard collapsible stock with no modifications. Provides a comfortable surface with an enhanced cheek weld and both standard and quick-detach sling mounting options. In addition, two watertight compartments provide silent and cushioned battery storage that eliminates the possibility of contact resulting in discharged batteries.

- Easily affixes to collapsible buttstock (may not work with non-standard models)
- Upper section provides enhanced cheek weld
- Two watertight storage compartments that separate batteries to prevent charge offs and reduce rattle
- Quick Detach Sling mounting point and sling slot

E2BSA	Weight: 4.96oz	Height: 3.193"	Width: 3.465"	Length: 5.915"
-------	----------------	----------------	---------------	----------------



MADE IN
USA

LIFETIME
WARRANTY

BATTLELINK™

401 GPS LOWER MOUNT

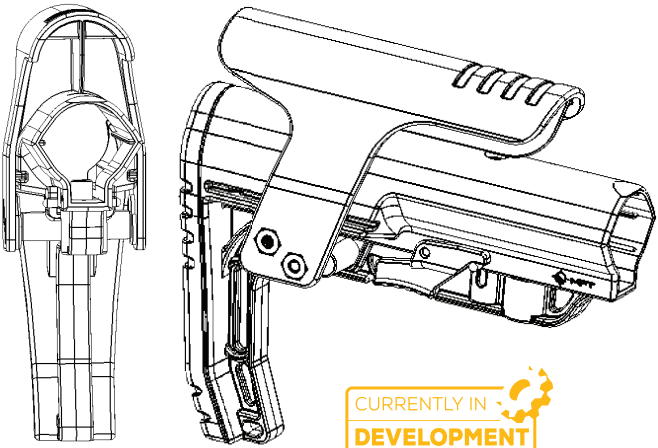
Mounts to MFT's Battlelink Utility Stock (BUS). Utilize a Garmin 401 to visualize location, positioning, and rally points in "real time" presentation while maintaining weapon retention. Securely mounted to the stock decreasing the chances of loosing valuable battlefield location data. Two (2) toolless stainless steel mounting screws allow for easy access to the batteries and a foam pad eliminates all rattle.

- Designed for use with the Garmin 401
- Ambidextrous Mounting Option
- Designed for use with Battlelink™ Utility Stock Series

MADE IN
USA

LIFETIME
WARRANTY

B401LM	Weight: 0.16oz	Height: 1.601"	Width: 0.711"	Length: 0.750"
--------	----------------	----------------	---------------	----------------



CURRENTLY IN
DEVELOPMENT

BATTLELINK™

MINIMALIST CHEEK REST

Works with MFT's Minimalist stock series as well as a standard collapsible stock. It is the solution to increasing the height of your cheek rest for proper eye alignment. The height is fixed and offer a stable shooting platform for optimal eye-to-optic focus and a strong cheek weld contact position. While minimizing muscle and eye strain, the BMCR allows the full usage of the charging handle due to the built-in limiting stop that insures interference-free operation of the rifle.

- Stable Shooting Platform
- Charging handle can be operated with cheek piece in any position other than indicated by stop
- Designed for use with BATTLELINK™ BMS and standard collapsible stocks

BMCR	Weight: NA	Height: NA	Width: NA	Length: NA
------	------------	------------	-----------	------------

BATTLELINK™

401 GPS UPPER MOUNT

Mounts to all Battlelink Stocks. Utilize a Garmin 401 to visualize location, positioning, and rally points in "real time" presentation while maintaining weapon retention. Securely mounted to the stock decreasing the chances of losing valuable battlefield location data. Two (2) toolless stainless steel mounting screws allow for easy access to the batteries and a foam pad eliminates all rattle.

- Designed for use with the Garmin 401
- Ambidextrous Mounting Option
- Designed for use with all Battlelink™ Stocks

MADE IN
USA

LIFETIME
WARRANTY

B401UM	Weight: 0.56oz	Height: 1.647"	Width: 2.373"	Length: 0.750"
--------	----------------	----------------	---------------	----------------



The ENGAGE™ tactical pistol grip series provides a combination of fit and function unparalleled by the originally supplied M16/AR15/M4/HK416/AK47 pistol grip.

ENGAGE™ EPG27 PISTOL GRIP

Current Handgun pistol grips were carefully considered and reviewed to create a modern full-sized AR pistol grip that offer positive support and control for one handed operations. The finger swell and grooved back straps provide a positive grip surface with wet or gloved hands.

- Increases operator comfort and weapon performance, providing more control during reloading and firing
- Tab covers the receiver gaps that cause discomfort during sustained usage and can be easily removed if desired
- Designed for M16/M4/AR15/HK416
- Full Size Pistol Grip
- Optimal for one handed operation



EPG27 Weight: 2.4oz Height: 5.007" Width: 1.22" Length: 3.026"

ENGAGE™ TACTICAL PISTOL GRIP V2

15 degree angle improves comfort and control. Texture provides a positive grip surface with wet or gloved hands A combination of fit and function unparalleled by the originally supplied M16/AR15/M4/HK416 pistol grip.

- 15 degree angle
- Tab covers the receiver gaps that cause discomfort during sustained usage and can be easily removed if desired
- Designed for M16/M4/AR15/HK416



EPG16V2 Weight: 2.2oz Height: 5.025" Width: 1.22" Length: 3.043"

Camo Grey
Mil Spec
Pantone 36170
Foliage Green
Mil Spec
Pantone 34160
Flat Dark Earth
Mil Spec
Pantone 20270
Scorched Dark Earth



ENGAGE™ TACTICAL PISTOL GRIP

Finger swells are textured and the grooved backstraps provide a positive grip surface with wet or gloved hands.

- Tab covers the receiver gaps that cause discomfort during sustained usage and can be easily removed if desired
- Finger swells and a grooved backstrap provide a non-slip grip
- Secure water resistant storage compartment
- Plug retention for one handed storage access
- Customizable storage system with quick access tab diminishes rattle



EPG16 Weight: 2.4oz Height: 4.804" Width: 1.22" Length: 3.420"



ENGAGE™ INTERCHANGEABLE PISTOL GRIP

Interchangeable textured finger swells (3) and back straps (3) provide a positive grip surface with wet or gloved hands and allow the user to customize the fit. A combination of fit and function unequaled by the originally supplied M16/AR15/M4/HK416 pistol grip.

- Designed for M16/M4/AR15/HK416
- Any combination of interchangeable back straps and finger swells allow for a custom fit for any sized hand
- Tab covers the receiver gaps that cause discomfort during sustained usage and can be easily removed if desired
- Secure water resistant storage compartment
- Customizable storage system with quick access tab diminishes rattle



EPG116 Weight: 3.7oz Height: 4.847" Width: 1.220" Length: 3.196"





PELICAN
1510 CASE

NIGHTHAWK

EOTech

PELICAN

MISSION FIRST
TACTICAL

MISSION



● Camo Grey
Mil Spec
Pantone 36170

● Foliage Green
Mil Spec
Pantone 34160

● Flat Dark Earth
Mil Spec
Pantone 20270

● Scorched Dark Earth

A REACT™
MAGWELL GRIP



A compact textured vertical grip designed for close handhold application at the low ready or CQB situations. Locates support hand forward of the magazine well to prevent injury if an overcharged round causes the ejection of the magazine. Right and left handed pressure pad wells for wired switches and spare battery storage compartment. Allows the support hand to apply rearward pressure keeping the weapon shouldered, yielding better muzzle control and accuracy.

- Allows mid-point balance and less effort to direct muzzle
- Pressure pad wells are designed for Surefire™ ST Switch and allow accessory activation for both RH & LH operators
- Secure water resistant storage compartment
- Will not interfere with magazine
- Designed for M16/M4/AR15/HK416

RMG Weight: 3.73oz Height: 4.314" Width: 1.524" Length: 2.205"

B REACT™
TORCH GRIP



A combination of compact textured vertical grip and illumination mount. Designed for use with a .75", .825", or 1" diameter rear activated or wired switch flashlight/laser. Provides a positive grip surface and allows the support hand to apply rearward pressure keeping the weapon shouldered, yielding better muzzle control and accuracy.

- Combination vertical grip and illumination mount
- Accepts light sources of .75", .825", 1" diameter
- Lock-out switch prevents unintentional activation of light source
- Grooved gripping surfaces to eliminate hand slippage
- Pressure pad well is designed for Surefire™ ST Switch and allow accessory activation for both RH and LH operators
- Thumb activation switch for wireless light activation
- Secure water resistant storage compartment
- Customizable storage system; quick access tab diminishes rattle
- Flat non-slip bottom surface aids in supported firing positions
- International shipments DO NOT require an export license, this item ships freely

RTG Weight: 7.4oz Height: 4.727" Width: 1.573" Length: 4.833"

C REACT™
QUICK DETACH GRIP



Full fist-sized textured vertical grip that quickly detaches or attaches without the use of tools and provides a positive grip surface. Allows the support hand to apply rearward pressure keeping the weapon shouldered, yielding better muzzle control and accuracy.

- Quick detach vertical grip
- Grooved gripping surfaces to eliminate hand slippage
- Secure water resistant storage compartment
- International shipments DO NOT require an export license, this item ships freely

RQDG Weight: 2.72oz Height: 4.069" Width: 2.190" Length: 5.546"

D REACT™
SHORT GRIP



Compact textured vertical grip designed to minimize material and dimension while providing a positive grip surface. Allows the support hand to apply rearward pressure keeping the weapon shouldered, yielding better muzzle control and accuracy.

- Secure water resistant plugged battery or part storage
- Customizable storage system; quick access tab diminishes rattle
- Flat non-slip bottom surface aids in supported firing positions
- International shipments DO NOT require an export license, this item ships freely

RSG Weight: 2.0oz Height: 3.960" Width: 1.381" Length: 2.205"

E REACT™
FOLDING GRIP



A textured vertical grip that deploys in either a vertical or horizontal position and provides a positive grip surface. Allows the support hand to apply rearward pressure keeping the weapon shouldered, yielding better muzzle control and accuracy.

- Allows deployment in either vertical or horizontal position
- Push button allows easy selection of position
- Secure water resistant storage compartment
- Customizable storage system; quick access tab diminishes rattle
- Flat non-slip bottom surface aids in supported firing positions

RFG Weight: 3.73oz Height: 4.314" Width: 1.524" Length: 2.205"

F REACT™
FULL SIZE GRIP



Full fist-sized textured vertical grip with finger swells that provides a positive grip surface. This grip allows the support hand to apply rearward pressure to keep the weapon shouldered to enhance muzzle control and accuracy.

- Full-size vertical grip
- Contoured finger swells allow a firm grip even with gloved hands
- Secure water resistant storage compartment
- Customizable storage system; quick access tab diminishes rattle
- Flat non-slip bottom surface aids in supported firing positions
- International shipments DO NOT require an export license, this item ships freely

REG Weight: 2.0oz Height: 3.960" Width: 1.381" Length: 2.205"



POLYMER DROP IN RAIL SYSTEM

TEKKO™

TEKKO POLYMER AR15 CARBINE 7" DROP IN M-LOK™ RAIL SYSTEM

The Tekko Polymer AR15 Carbine M-LOK™ Rail System replaces the plastic factory handguard in minutes and requires no gunsmithing. No permanent alterations need to be made to the rifle, it's a drop in screwless installation, the unit is held in place by the Delta ring and handguard cap. M-LOK™ provides a secure platform for mounting Picatinny rails and accessories such as vertical grips, lights, lasers, bipods and other rail mounted kit. There is a built in QD mount for right handed shooters, sorry lefties you'll have to buy the M-LOK™ QD accessory. A monolithic style continuous top rail eliminates the gap between the receiver and rail. MFT's proprietary polymer ensures heat and impact resistance, made in the USA with a Lifetime Warranty.

- No Gunsmithing, drop in screwless installation, held in place by Delta ring and handguard cap with no permanent alterations to rifle
- Built in QD mount for right handed shooters
- M-LOK™ locations provide a secure platform for mounting Picatinny rails and accessories
- Monolithic style continuous top rail

LIFETIME WARRANTY
MADE IN USA

TP15MRS Length: 8.961" Weight: 4.8 oz Height: 2.370" Width: 2.00"

Scorched Dark Earth



TEKKO™
DROP IN INTEGRATED RAIL SYSTEM

The Tekko Metal AR Rail System replaces the plastic factory handguard in minutes and requires no gunsmithing or special installation tools. Drop in, screwless, installation means no permanent alterations need be made to the rifle. The unit is held in place by the Delta ring and handguard cap. Four MIL-STD Picatinny Rails provide secure mounting for rail attachments and accessories such as vertical grips, lights, lasers, bipods and other rail mounted kit. Monolithic style continuous top rail eliminates the gap between the receiver and rail. Four QD mounts, two on each side for push button sling swivels. Lightweight 6061 aluminum construction is Type 3 hard coat anodized.

- No gunsmithing, drop in screwless installation, held in place by Delta ring and handguard cap with no permanent alterations to rifle
- 4 MIL-STD 1913 Picatinny Rails provide a secure platform for mounting Picatinny accessories
- 4 QD mounts, two on each side for push button sling swivels
- Monolithic style continuous top rail
- Lightweight 6061 aluminum construction is hard coat anodized



TMARCIRS	Length: 7.25"	Weight: 12oz	Height: 2.42"	Width: 2.29"
TMARMIRS	Length: 9.25"	Weight: 15.5oz	Height: 2.42"	Width: 2.29"



- Camo Grey Mil Spec Pantone 36170
- Foliage Green Mil Spec Pantone 34160
- Flat Dark Earth Mil Spec Pantone 20270
- Scorched Dark Earth

TEKKO™
DROP IN KEYMOD RAIL SYSTEM

The Tekko Metal AR Carbine KeyMod™ Rail System replaces the plastic carbine factory handguard in minutes and requires no gunsmithing or special installation tools. Drop in, screwless, installation means no permanent alterations need be made to the rifle. The unit is held in place by the Delta ring and handguard cap. KeyMod™ attachment system provides secure mounting for KeyMod™ accessories such as MIL-STD 1913 Picatinny Rail attachments vertical grips, lights, lasers, bipods and other rail mounted kit. KeyMod™ system allows for universal modularity between numerous manufacturers of accessories, and accessory rails. 7" lightweight 6061 aluminum construction is Type 3 hard coat anodized.

- Carbine handguard replacement (7")
- No gunsmithing
- Drop in screwless installation
- KeyMod™ The New Standard in Modularity
- Secure platform for mounting Picatinny Rails and accessories
- Lightweight 6061 aluminum construction is Type 3 hard coat anodized



TMARCKRS	Length: 7.258"	Weight: 8.16oz	Height: 1.634"	Width: 1.821"
-----------------	----------------	----------------	----------------	---------------

- Camo Grey Mil Spec Pantone 36170
- Foliage Green Mil Spec Pantone 34160
- Flat Dark Earth Mil Spec Pantone 20270
- Scorched Dark Earth



TEKKO™
DROP IN M-LOK™ RAIL SYSTEM

The Tekko Metal AR Carbine M-LOK™ Rail System replaces the plastic carbine factory handguard in minutes and requires no gunsmithing or special installation tools. Drop in, screwless, installation means no permanent alterations need be made to the rifle. The unit is held in place by the Delta ring and handguard cap. M-LOK™ attachment system provides secure mounting for M-LOK™ accessories such as MIL-STD 1913 Picatinny Rail attachments vertical grips, lights, lasers, bipods and other rail mounted kit. M-LOK™ system allows for universal modularity between numerous manufacturers of accessories, and accessory rails. 7" lightweight 6061 aluminum construction is Type 3 hard coat anodized.

- Carbine handguard replacement (7")
- No gunsmithing
- Drop in screwless installation
- M-LOK™
- Secure platform for mounting Picatinny Rails and accessories
- Lightweight 6061 aluminum construction is Type 3 hard coat anodized



TMARCMRS	Length: 7.258"	Weight: 7.2 oz	Height: 1.634"	Width: 1.821"
-----------------	----------------	----------------	----------------	---------------

- Camo Grey
Mil Spec
Pantone 36170
- Foliage Green
Mil Spec
Pantone 34160
- Flat Dark Earth
Mil Spec
Pantone 20270
- Scorched Dark Earth



TEKKO™
FREE FLOAT 2 PIECE INTEGRATED RAIL SYSTEM

7" Free Float 2 Piece Integrated Rail System replaces the plastic factory handguard in minutes and requires no gunsmithing, removal of Delta Ring is required. Four MIL-STD 1913 Picatinny Rails provide a secure platform for mounting Picatinny accessories such as vertical grips, lights, lasers, bipods and other rail mounted kit. A monolithic style continuous top rail eliminates the gap between the receiver and rail. There are four QD mounts, two on each side for push button sling swivels. The 7" lightweight 6061 aluminum construction is hard coat anodized.

- Quick installation, no gunsmithing, removal of Delta Ring is required.
- 4 MIL-STD 1913 Picatinny Rails provide a secure platform for mounting Picatinny accessories
- Monolithic style continuous top rail
- 4 QD mounts, two on each side for push button sling swivels
- Lightweight 6061 aluminum construction is hard coat anodized



TMARCF27IRS	Length: 7.062"	Weight: 13oz	Height: 2.42"	Width: 2.29"
TMARCF210IRS	Length: 10.062"	Weight: 17oz	Height: 2.42"	Width: 2.29"



- Camo Grey
Mil Spec
Pantone 36170
- Foliage Green
Mil Spec
Pantone 34160
- Flat Dark Earth
Mil Spec
Pantone 20270
- Scorched Dark Earth

TEKKO™

FREE FLOAT M-LOK™ RAIL SYSTEM

Free Float M-LOK™ Rail System replaces the plastic factory handguard. M-LOK™ attachment system provides secure mounting for MIL-STD 1913 Picatinny Rails and accessories such as vertical grips, lights, lasers, bipods and other rail mounted kit. Will accommodate most suppressor installations. Patent pending mounting, indexing and lock up system. Larger range of modularity with offset mounting positions as well as the traditional 12, 3, 6 and 9 o'clock positions. Monolithic style top rail eliminates the gap between the receiver and rail. Minor assembly required, utilizes standard barrel nut and will accommodate a standard front sight post, low profile gas block or Picatinny Rail gas block. The M-LOK™ system allows for universal modularity between numerous manufacturers of accessories, and accessory rails. Lightweight 6061 aluminum construction is Type 3 hard coat anodized.

- Handguard replacement
- Secure platform for mounting Picatinny Rails and accessories
- Monolithic style top rail
- Allows most suppressor installations
- Lightweight 6061 aluminum construction is Type 3 hard coat anodized
- Removal of Delta ring and front sight post required
- M-LOK™



TMARFF7MRS	Length: 7"	Weight: 8oz	Height: 2.42"	Width: 2.29"
TMARFF10MRS	Length: 10.062"	Weight: 12oz	Height: 2.42"	Width: 2.29"
TMARFF13MRS	Length: 13.5"	Weight: 16oz	Height: 2.42"	Width: 2.29"
TMARFF15MRS	Length: 15"	Weight: 16oz	Height: 2.42"	Width: 2.29"

*I.D. clearance at barrel 1.702" dia.



TMARFF7MRS

7" Free float rail system



TMARFF10MRS

10" Free float rail system



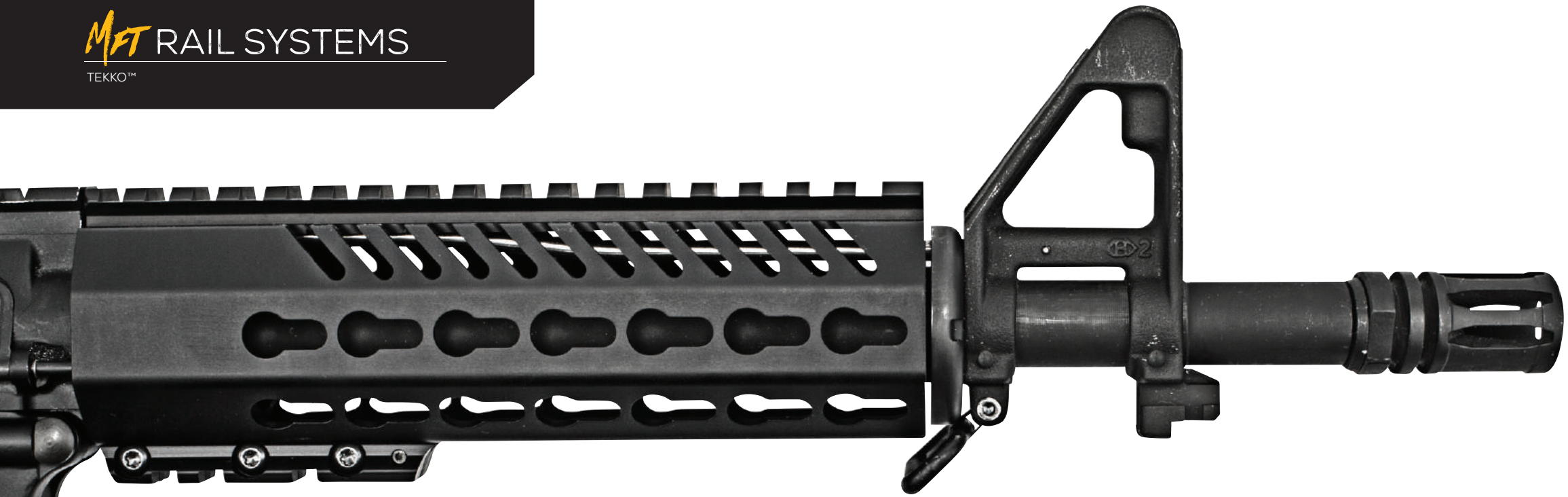
TMARFF13MRS

13.5" Free float rail system



TMARFF15MRS

15" Free float rail system



TEKKO™
FREE FLOAT KEYMOD RAIL SYSTEM

Free Float KeyMod™ Rail System replaces the plastic factory handguard. KeyMod™ attachment system provides secure mounting for MIL-STD 1913 Picatinny Rails and accessories such as vertical grips, lights, lasers, bipods and other rail mounted kit. Will accommodate most suppressor installations. Patent pending mounting, indexing and lock up system. Larger range of modularity with offset mounting positions as well as the traditional 12, 3, 6 and 9 o'clock positions. Monolithic style top rail eliminates the gap between the receiver and rail. Minor assembly required, utilizes standard barrel nut and will accommodate a standard front sight post, low profile gas block or Picatinny Rail gas block. The KeyMod™ system allows for universal modularity between numerous manufacturers of accessories, and accessory rails. Lightweight 6061 aluminum construction is Type 3 hard coat anodized.

- Handguard replacement
- Secure platform for mounting Picatinny Rails and accessories
- Monolithic style top rail
- Allows most suppressor installations
- Lightweight 6061 aluminum construction is Type 3 hard coat anodized
- Removal of Delta ring and front sight post required
- KeyMod™ The New Standard in Modularity



TMARFF7KRS	Length: 7.0"	Weight: 8.16oz	Height: 2.487"	Width: 1.875"
TMARFF10KRS	Length: 10.062"	Weight: 10.6oz	Height: 2.487"	Width: 1.875"
TMARFF13KRS	Length: 13.5"	Weight: 12.6oz	Height: 2.487"	Width: 1.875"
TMARFF15KRS	Length: 15"	Weight: 14.6oz	Height: 2.487"	Width: 1.875"

*I.D. clearance at barrel 1.702" dia.



TMARFF7KRS
7" Free float rail system



TMARFF10KRS
10" Free float rail system



TMARFF13KRS
13.5" Free float rail system



TMARFF15KRS
15" Free float rail system



E-VOLV™
2.2" PICATINNY RAIL

Polymer rail can be mounted to either standard or Glacier Guard handguards through the existing vent openings. Design insures mounting is parallel to the bore/barrel for ballistic alignment.

- For standard and thickened heat shield
- Compensated design allows for true alignment with barrel/bore



E2PR2	Length: 2.216"	Weight: 0.32oz	Height: 0.574"	Width: .752"
-------	----------------	----------------	----------------	--------------



TEKKO™
KEYMOD 3" & 6" RAILS

Metal KeyMod™ Rails are a MIL-STD 1913 Picatinny Rail that will interface with any KeyMod™ mounting surface. Manufactured from lightweight, Type 3 hard coat anodized 6061 aluminum. Mounting hardware is stainless steel and features a snag resistant design with a self-contained assembly that eliminates the loss of mounting hardware.

- 3" (7 slot) MIL-STD 1913 Picatinny Rail for use with all KeyMod™ systems
- 6" (12 slot) MIL-STD 1913 Picatinny Rail for use with all KeyMod™ systems
- Secure platform for mounting Picatinny Rail accessories
- Easy attachment and removal
- Self-contained assembly eliminates the loss of mounting hardware
- Lightweight 6061 aluminum construction is Type 3 hard coat anodized
- KeyMod™ The New Standard in Modularity



TMKMR3 - 3" 7 SLOT	Length: 2.948"	Weight: 1.12oz	Height: .375"	Width: .835"
TMKMR6 - 6" 12 SLOT	Length: 6.098"	Weight: 2.24oz	Height: .375"	Width: .835"



TEKKO™
5 SLOT M-LOK™ PICATINNY RAIL

Metal M-LOK™ Rails are a MIL-STD 1913 Picatinny Rail that will interface with any M-LOK™ mounting surface. Manufactured from lightweight, Type 3 hard coat anodized 6061 aluminum.

- 2 3/8" (5 slot) MIL-STD 1913 Picatinny Rail for use with all M-LOK™ systems
- Secure platform for mounting M-LOK™ accessories
- Easy attachment and removal
- 6061 aluminum is Type 3 hard coat anodized



TMMLR5	Length: 3.145"	Weight: N/A	Height: .528"	Width: .833"
--------	----------------	-------------	---------------	--------------



E-VOLV™

3 PRONG PORTED MUZZLE BRAKE

5.56 - .223 AR15/M4

Reduces muzzle brake with the aid of 4 ports on top. The 2 ports on either side direct gas horizontally keeping recoil to a minimum. The front three prongs help direct the remaining gas and concussion forward from the shooter. All these elements make up a very comfortable muzzle brake for indoor and outdoor shooters. Where other muzzle brakes direct gas only horizontally MFT's comp takes it a step further.

- 2 port design for lateral gas dispersion aids in reducing recoil
- 4 top port design aids in keeping the muzzle brake down
- 3 prong design aids in directing gas and concussion forward and away from shooter
- 416 Stainless Steel
- Black Nitride Finish
- Milspec Crush Washer Included - 17PH4 Stainless Steel pre-hardened



E2ARMD1	Weight: 1.6 oz	Height: .625"	Width: .625"	Length: 2.00"
---------	----------------	---------------	--------------	---------------

E-VOLV™

5 DIRECTION COMPENSATOR

5.56 - .223 AR15/M4

Disperses gas in 5 distinct directions. This feature aids in wide gas flow to limit recoil and muzzle climb. There are no bottom slots to keep the dust down during low level shooting. Slim profile matches the contour of the M4 style AR barrel, making for that clean, sleek transition.

- 2 Multi-port gas flow aids in recoil reduction
- 416 Stainless Steel
- Black Nitride Finish
- Milspec Crush Washer Included - 17PH4 Stainless Steel pre-hardened



E2ARMD2	Weight: 1.6 oz	Height: .625"	Width: .625"	Length: 2.00"
---------	----------------	---------------	--------------	---------------

E-VOLV™

3 PRONG FLASH HIDER

5.56 - .223 AR15/M4

Projects gas in the proper directions to keep flash footprint to a minimum. Also channeling a small amount of gas through a port upward to help diminish muzzle climb. The Length helps keep the flash signature to a minimum for most 5.56/.223 bullet grain weights. Flash less shooting experience.

- Reduces flash significantly with a three-prong curved design
- Small port hole on top helps direct gas to aid in muzzle climb reduction

- 416 Stainless Steel
- Black Nitride Finish
- Milspec Crush Washer Included - 17PH4 Stainless Steel pre-hardened



E2ARMD5	Weight: 2.4 oz	Height: .751"	Width: .751"	Length: 2.51"
---------	----------------	---------------	--------------	---------------

E-VOLV™

4 PRONG SIDE PORT MUZZLE BREAK/COMPENSATOR HYBRID

5.56 - .223 AR15/M4

Designed to be a true hybrid. Gas is forced forward and away from the shooter as well as disbursed out the sides. The first chamber helps direct gas up through the ports on top which aids with muzzle climb. Gas exiting out the sides aid in recoil reduction. The forward 4 prongs direct the concussion and remaining gas forward and away from the shooter. This will keep the shooter to your left and right a bit happier.

- 4 prongs gas direction design aids in gas dispersion
- 2 horizontal gas ports aid in felt recoil
- 2 vertical ports aid in muzzle climb reduction
- 416 Stainless Steel
- Black Nitride Finish
- Milspec Crush Washer Included - 17PH4 Stainless Steel pre-hardened



E2ARMD3	Weight: 2.4 oz	Height: .875"	Width: .875"	Length: 2.00"
---------	----------------	---------------	--------------	---------------

E-VOLV™

TAPERED 3 PORT COMPENSATOR

5.56 - .223 AR15/M4

Designed to reduce recoil and muzzle climb. 2 angled ports on top direct gas up and backwards to aid in muzzle climb and recoil reduction. 3 horizontal ports on each side direct gas out and away aiding in recoil reduction and adequate gas disbursements. Slim profile makes for a clean transition to the end of the barrel and is a must have for any custom AR build.

- Slim profile
- 3 horizontal port holes aid in recoil reduction and gas disbursement
- 2 vertical port holes aid in reducing muzzle climb & recoil



E2ARMD4	Weight: 2.4 oz	Height: .625"	Width: .875"	Length: 2.25"
---------	----------------	---------------	--------------	---------------

E-VOLV™

AR15 OVERSIZED CHARGING HANDLE LATCH

Designed for use with the AR15, M4 and M16. Replaces the standard charging handle latch in minutes. Oversized latch allows for easy manipulation of the charging handle especially with gloved hands. *Charging handle not included

- Oversized charging handle latch
- Replaces the standard charging handle latch
- Provides positive manipulation of the charging handle



E2OCHL	Weight: 0.32oz	Height: 0.5"	Width: 1.271"	Length: 1.193"
--------	----------------	--------------	---------------	----------------



E-VOLV™

AR15 LOW PROFILE CHARGING HANDLE LATCH

Designed for use with the AR15, M4 and M16. Replaces the standard charging handle latch in minutes. Lower profile latch allows for easy manipulation of the charging handle with either hand while offering larger purchase pad than standard charging handle latch. *Charging handle not included

- Low Profile charging handle latch offers larger purchase pad than original charging handle latch
- Replaces the standard charging handle latch
- Provides positive manipulation of the charging handle with either hand



E2LPCHL	Weight: 0.26oz	Height: 0.35"	Width: 0.867"	Length: 1.193"
---------	----------------	---------------	---------------	----------------



E-VOLV™

ENHANCED MAG RELEASE

Provides an enlarged contact surface on an AR15 for quick magazine changes. Easy bolt-on installation, no gunsmithing required. Constructed from aviation grade aluminum.

- Mil-spec anodized aluminum
- Two-piece construction for easy installation
- Larger contact surface for positive activation
- Compatible with most 5.56 and 7.62 pattern receivers



E2AREMR	Weight: 0.128 oz	Height: .435"	Width: .656"	Length: .545"
---------	------------------	---------------	--------------	---------------



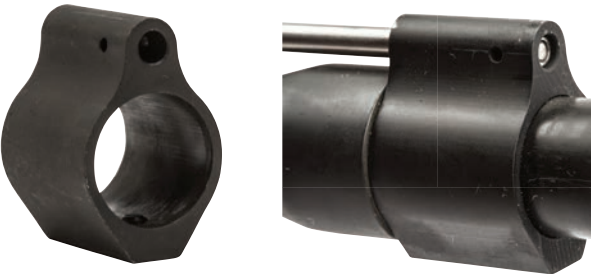
E-VOLV™

BIPOD MOUNT

The E-Volv Bipod Mount is designed for use with MIL-STD 1913 Picatinny Rails. The E2BPM mounts a sling swivel stud onto your rail for use with bipods and sling swivels. Constructed out of lightweight 6061 aluminum that is Type 3 hard coat anodized.

- Mount a sling swivel stud onto a Picatinny Rail
- Quick and easy mounting allows for easy and fast attachment and removal
- Mount on side of a Picatinny Rail for use as a side sling adapter
- Lightweight 6061 aluminum construction is Type 3 hard coat anodized

E2BPM	Weight: 1.4 oz	Height: .973"	Width: 1.20"	Length: 2.375"
-------	----------------	---------------	--------------	----------------



E-VOLV™

LOW PROFILE GAS BLOCK

Designed for use with the AR15, M4 and M16. Fits .750 barrels, 1 inch long, steel with a Manganese phosphate finish. Mounting utilizes knurled cup pin steel set screws. Allows usage with handguard systems that extend past the standard gas port location on the barrel.

- Fits .750 barrels
- Steel with a Manganese phosphate finish
- Mounts utilizing knurled cup pin steel set screws
- One inch (1")



E2LPGB	Weight: 1.4oz	Height: 1.363"	Width: 0.9"	Length: 0.950"
--------	---------------	----------------	-------------	----------------

E-VOLV™

ENHANCED TRIGGER GUARD

Replaces factory trigger guard and oversized opening offers full access to the trigger, including gloved hands. Polymer trigger guard held in place with included standard roll pins.

- Polymer
- Offers full access to the trigger
- Hardware included



E2ARETG	Weight: 3.5oz	Height: 4.091"	Width: 1.220"	Length: 2.999"
---------	---------------	----------------	---------------	----------------



TORCH™

STANDARD MOUNT

Accepts a 3/4", .825" or 1" illumination device. Two large purchase pads allow for tool free quick mounting or reconfiguration on a Picatinny Rail.

- Quick detach mount for illumination source or lasers
- Large purchase pad for quick release
- Accommodates .75" - .825" - 1" diameter light/laser
- International shipments DO NOT require an export license, this item ships freely



TSM	Weight: 2.0oz	Height: 3.960"	Width: 1.381"	Length: 2.205"
-----	---------------	----------------	---------------	----------------



TORCH™

BACKUP LIGHT

Low profile, Picatinny mounted, pressure pad activated light ideal for home protection, navigation or as backup to a primary illumination source. Low output illumination for signature reduction during patrol, stealth structure search, approach to target, and breaching operations. 10-year storage lifespan, 12-hour burn time, 20-lumen output weighing just 22 grams.

- Power button can be set to momentary or constant on
- Set screw for Picatinny Rail mounting
- Battery door opens with quarter-turn
- Primary LED
- Low-output LED

Domestic U.S.A SALES ONLY

Weight: .8oz	TBLW White /White LED
Height: .665"	TBLWR White /Red LED
Width: 1.482"	TBLIR IR/Red LED
Length: 2.220"	





MFT CLASSIC™

ONE POINT SLING MOUNT

One Point Sling Mount is a single point sling mount for snap clips or conventional slings up to 1.25" webbing. No tube disassembly necessary; remove collapsible buttstock, slide on tube, position properly and secure. CNC machined from aviation grade aluminum with matte black finish.

- Single point mount
- No tube disassembly required
- CNC machined from aviation grade aluminum with matte black finish



OPSM	Weight: 0.8oz	Height: 2.11"	Width: 2.119"	Length: 0.678"
------	---------------	---------------	---------------	----------------

TEKKO™

METAL M-LOK™ QUICK DETACH SLING MOUNT



Metal M-LOK™ QD Sling Mount interfaces with any M-LOK™ mounting surface. Designed for use with the standard push button, quick detach sling swivel. Low profile and snag resistant design requires 2 slots for mounting. Braked, 4 position (360°), non-rotating locking interface. Machined from lightweight, Type 3 hard coat anodized, 6061 aluminum.

- Designed for use with the standard push button, QD sling swivel
- Interfaces with any M-LOK™ mounting surface
- 6061 aluminum construction is Type 3 hard coat anodized
- Braked, 4-position (360°), non-rotating locking interface
- Low profile and snag resistant design



TMMLQDSM	Weight: N/A	Height: .440"	Width: N/A	Length: 1.400"
----------	-------------	---------------	------------	----------------



TEKKO™

KEYMOD QUICK DETACH SLING MOUNT

Metal KeyMod™ QD Sling Mount interfaces with any KeyMod™ mounting surface. Designed for use with the standard push button, quick detach sling swivel. Low profile and snag resistant design requires 2 slots for mounting. Braked, 4 position (360°), non-rotating locking interface. Machined from lightweight, Type 3 hard coat anodized, 6061 aluminum. Mounting hardware is stainless steel and features a snag resistant design with a self-contained assembly that eliminates the loss of mounting hardware.

- Designed for use with the standard push button, QD sling swivel
- Interfaces with any KeyMod™ mounting surface
- Lightweight 6061 aluminum construction is Type 3 hard coat anodized
- Self-contained assembly eliminates the loss of mounting hardware
- Braked, 4-position (360°), non-rotating locking interface
- Low profile and snag resistant design
- Requires 2 Slots for mounting
- KeyMod™ The New Standard in Modularity



TMKMQDSM	Weight: 0.8oz	Height: .406"	Width: .625"	Length: 2.30"
----------	---------------	---------------	--------------	---------------



MFT CLASSIC™

ONE POINT SLING

The MFT Classic™ one point sling allows easy movement when operating inside confined spaces. Maintains its structure for easy donning and has upgraded tubular webbing with fully-enclosed bungee portion, allowing for increased durability.

- Constructed from 1.5" nylon web
- Metal carabiner for easy attachment
- Fully adjustable sling fits all body sizes
- High density bungee cord and carabiner are colored black
- Quick release side buckle



OPSI	Weight: 7.3oz	Height: 26.425"	Width: 2.137"	Length: 33.275"
------	---------------	-----------------	---------------	-----------------



MFT CAMO KITS

Your favorite MFT parts hydro dipped in the most popular camo patterns!

MFT BACK UP SIGHTS

OVER ENGINEERED FOR TODAY'S MODERN WARRIOR

Camo Grey
Mil Spec
Pantone 36170

Foliage Green
Mil Spec
Pantone 34160

Flat Dark Earth
Mil Spec
Pantone 20270

Scorched Dark Earth

**NEW
&
IMPROVED
DESIGN**

MFT SIGHTS™

FRONT BACK UP POLYMER SIGHT

Polymer Flip up Front Sight with standard iron sight elevation adjustment mounts onto a 1913 Picatinny Rail. Will accept any standard front post blade. Standard front sight tool is required with each click equaling the standard 1/4 MOA. Unlike other backup sights MFT has developed a shroud that shelters the front post blade from debris and impact damage when not deployed. A slim profile allows the sight to sit under most optics.

- Full elevation adjustment, tool required
- Low profile snag resistant design
- Shroud protects front post blade from debris and impact damage
- Accepts any standard front post blade
- Can fold to the rear, the correct direction if dropped
- Manufactured out of super tough polyamide
- International shipments DO NOT require an export license, this item ships freely



BUPSWF Weight: .5 oz Height: .879" Width: 1.08" Length: 2.23" O.A. /.6" from top of rail

ENHANCED CHANGES FOR GEN. 2 FRONT SIGHT

- Rail clamp nut redesigned, no stripping out when overtightened.
- Front sight post is steel with manganese phosphate coating.
- Strengthened the threaded insert that carries the front sight post.
- All plastic components have been changed to a higher strength material.
- Retaining pin for the cover redesigned, pin will not slip out of position.

MFT SIGHTS™

REAR BACK UP POLYMER SIGHT

Polymer Flip Up Rear Sight with Windage Adjustment mounts onto a 1913 Picatinny Rail. A flat head screw driver is required to adjust an Infinite MOA. Unlike other backup sights MFT has developed a shroud that shelters the aperture from debris and impact damage when not deployed. A slim profile allows the sight to sit under all current magnifiers and optics.

- Low profile snag resistant design
- Shroud protects aperture from debris and impact damage
- Dual peep, same plane aperture allows for perfect co-witness
- Unique closure with either aperture deployed
- Can fold to the rear, the correct direction if dropped
- Sight works in conjunction with all standard height front sights
- Manufactured out of super tough polyamide
- International shipments DO NOT require an export license, this item ships freely



BUPSWR Weight: .5 oz Height: .879" Width: 1.08" Length: 2.23" O.A. /.6" from top of Rail

ENHANCED CHANGES FOR GEN. 2 REAR SIGHT

- Rail clamp nut has been redesigned so that there is no spin out when overtightened.
- Spherical edges of large and small apertures have been reversed as a result of user input.
- All plastic components have been changed to a higher strength material.
- Retaining pin for the cover has been redesigned so that the pin does not slip out of position.

**LIFETIME
WARRANTY**

**MADE IN
USA**



MISSION FIRST TACTICAL



ΜΟΛΩΝ ΛΑΒΕ



ALWAYS MISSION FIRST
PROUDLY MADE IN THE UNITED STATES OF AMERICA

MFT

AK47 COMPONENTS

OVER ENGINEERED FOR TODAY'S MODERN WARRIOR

- Camo Grey
Mil Spec
Pantone 36170
- Foliage Green
Mil Spec
Pantone 34160
- Flat Dark Earth
Mil Spec
Pantone 20270
- Scorched Dark Earth

A

ENGAGE™

AK47 TACTICAL
PISTOL GRIP

A combination of fit and function unequaled by the originally supplied AK47 pistol grip. Textured finger swells and a grooved back strap provide a positive grip surface with wet or gloved hands.

- Designed for AK47
- Full-size pistol grip replaces thinner original for a full-fisted hold
- Grip angle replicates M16 while not affecting trigger contact
- Plug retention for one handed storage access
- Finger swells and a grooved backstrap provide a non-slip grip
- Secure water resistant storage compartment
- Customizable storage system with quick access tab diminishes rattle
- 922R compliant

EPG47	Weight: 2.2oz	Height: 4.048"	Width: 1.220"	Length: 3.223"
-------	---------------	----------------	---------------	----------------



LIFETIME
WARRANTY

MADE IN
USA

ENGAGE™

AK47 INTERCHANGEABLE
PISTOL GRIP

A combination of fit and function unequaled by the originally supplied AK47 pistol grip. The grip angle replicates that of the M16, but does not affect the grip-to-trigger dimension. Interchangeable textured finger swells (3) and back straps (3) provide a positive grip surface with wet or gloved hands and allow the user to customize the fit.

- Designed for AK47
- Any combination of interchangeable back straps and finger swells allow for a custom fit for any sized hand
- Grip angle replicates M16 while not affecting trigger contact
- Secure water resistant storage compartment
- Customizable storage system with quick access tab diminishes rattle
- 922R compliant

EPGI47	Weight: 3.5oz	Height: 4.091"	Width: 1.220"	Length: 2.999"
--------	---------------	----------------	---------------	----------------



LIFETIME
WARRANTY

MADE IN
USA

B

TEKKO™

AK47 INTEGRATED RAIL SYSTEM

Replaces the original handguards on the AK47 family of rifles. Lower section installs in the same manner as the original part, while the upper section is easily attached using the included (4) bolts. When installed a stable, rattle-free platform that will not alter the zero capability of optics is insured. Four MIL STD 1913 Picatinny Rails, two full-length upper/lower and two side rails at just over 2 inches, offer options for mounting Picatinny accessories such as optics, lights/lasers, vertical forward grips, bipods and other rail mounted equipment. The two smaller side rails are easily removed. Included rail cover can be attached to the lower rail to maintain the original design profile.



- Lightweight alternative
- Simplified installation and unique attachment ensure a mounting system that will hold zero during extreme usage
- Lower Picatinny Rail cover offers original AK47 profile
- 922R compliant

LIFETIME
WARRANTY

MADE IN
USA

TP47IRS	Weight: 9.7oz	Height: 3.322"	Width: 2.451"	Length: 6.396"
---------	---------------	----------------	---------------	----------------

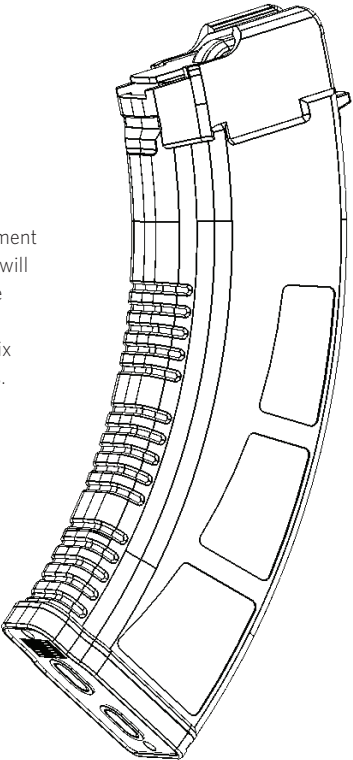
MFT MAGAZINE

AK MAGAZINE 7.62 X 39MM

30 round 7.62x39mm magazine designed for Kalashnikov pattern rifles is engineered as an enhancement of the standard design. The polymer locking lugs are lightweight, sturdy and highly reliable. The bolt will hold open on the last round fired and there is a fully loaded indicator hole on the magazine body. The MFT stipple texture, low profile front ribs and flared floor plate aid in extraction and handling while allowing under folder stock usage. The floor plate provides drop protection, has a paint pen dot matrix area for easy identification marking and is compatible with tight double and triple magazine pouches. Two fully functional drain holes ensure full and proper draining. Simple tool less disassembly.

- MADE IN THE USA
 - Impact resistant polymer body
 - Bolt Hold Open on last round fired
 - Anti-tilt, self-lubricating follower
 - Long-life stainless steel spring
 - MFT stipple texture
- Low profile ribs front texture
 - Flared Floor Plate
 - Paint Pen dot matrix on floor plate
 - Drain holes
 - Toolless disassembly

AKPM76239BAG	Weight: N/A	Height: N/A	Width: N/A	Length: N/A
--------------	-------------	-------------	------------	-------------





MFT LIFESTYLE

OVER ENGINEERED FOR TODAY'S MODERN WARRIOR



HELL YEAH TEE



ENEMIES TEE



AMERICAN TEE



TEAM MFER RIFLE TEE



MODERN WARRIOR TEE



FREEDOM FRIES TEE



FREEDOM FRIES PVC PATCH



MISSION FIRST MAIDEN PVC PATCH



MISSION FIRST PATCH HAT



MISSION FIRST TRUCKER HAT



MAIDEN TEE



LADIES TANK TOP



MADE IN USA TEE



WOMEN'S I HEART MF'ERS

DEATH by CHOCOLATE

A half-inch thick, life-size, 3-D replica of MFT's Extreme Duty Magazine. Weighing in at 6.5 ounces of premium David Bradley Milk Chocolate, grab one and take a bite!

EXDPMC	Weight: 6.5 oz	Height: 7.435"	Width: 2.525"	Thick: .515"
--------	----------------	----------------	---------------	--------------

MADE IN
USA

MFT LIFESTYLE

STICKERS

- Our sticker material is custom made to our high standards.
- Inks are typically at least 7-10 times thicker than other silkscreen printers and 10x-20x thicker than digitally printed stickers
- 10pt board backing—the average thickness of a postcard
- 100% UV protection, 3 passes of clear UV protection
- Permanent aggressive adhesive





MFT BEER
KOOZIES

Keep your refreshments close and your cold beers closer. Green Barrel Collapsible Beer Kozy. Mission First / Team MFT logo on each side.





MISSIONFIRSTTACTICAL.COM

INFO@MFTLTD.COM 267.704.0001

2020 EDITION